

# REPORT

## **Boston Alternative Energy Facility - Appendix 3 Part One**

### Appendix 3 Phase One Consultation (Part One)

Client: Alternative Use Boston Projects Ltd  
Planning Inspectorate Reference EN010095  
Document Reference 5.1  
Pursuant to Section 37(3)(c) of the Planning Act 2008  
Reference: PB6934-ATH-ZZ-XX-RP-Z-3003  
Status: Final/0.0  
Date: 23 March 2021



HASKONINGDHV UK LTD.

Rightwell House  
Rightwell East  
Bretton  
Peterborough  
PE3 8DW  
Industry & Buildings  
VAT registration number: 792428892

+44 1733 334455 **T**  
+44 1733 262243 **F**  
info@uk.rhdhv.com **E**  
royalhaskoningdhv.com **W**

Document title: Boston Alternative Energy Facility -  
Appendix 3 Part One  
Document short title: Appendix 3 Phase One Consultation (Part One)  
Reference: PB6934-ATH-ZZ-XX-RP-Z-3003  
Status: 0.0/Final  
Date: 23 March 2021  
Project name: Boston Alternative Energy Facility  
Project number: PB6934  
Author(s): Madeleine Astle

Drafted by: Madeleine Astle

---

Checked by: Abbie Garry

---

Date: 22/03/21

---

Approved by: Paul Salmon

---

Date: 23/03/21

---

Classification

Project related

*Unless otherwise agreed with the Client, no part of this document may be reproduced or made public or used for any purpose other than that for which the document was produced. HaskoningDHV UK Ltd. accepts no responsibility or liability whatsoever for this document other than towards the Client.*

*Please note: this document contains personal data of employees of HaskoningDHV UK Ltd.. Before publication or any other way of disclosing, this report needs to be anonymized.*

## Table of contents

<b>Appendix 3</b>	<b>Phase One Consultation Part One</b>
Appendix 3.1	Minutes from Planning Inspectorate meeting 25/01/2018
Appendix 3.2	Minutes from meetings with statutory consultees, local authority officers and councillors
Appendix 3.3	Letter sent at Phase One to local authority representatives and list of organisations it was sent to
Appendix 3.4	Phase One media release and media coverage
Appendix 3.5	Phase One maildrop flyer and list of postcodes
Appendix 3.6	Poster advertising Phase One Public Information Days and list of venues where this was displayed
Appendix 3.7	Phase One translated poster and locations it was sent to
Appendix 3.8	List of parish councils Phase One posters sent to
Appendix 3.9	Newspaper notices advertising Phase One Public Information Day locations and dates

## REPORT

# **Boston Alternative Energy Facility - Appendix 3.1**

Appendix 3.1 Minutes from Planning Inspectorate  
meeting 25/01/2018

Client: Alternative Use Boston Projects Ltd  
Planning Inspectorate Reference EN010095  
Document Reference 5.1  
Pursuant to Section 37(3)(c) of the Planning Act 2008  
Reference: PB6934-ATH-ZZ-XX-RP-Z-3003.1  
Status: Final/0.0  
Date: 23 March 2021





Appendix 3.1 Minutes from Planning Inspectorate meeting 25/01/2018

This appendix contains the minutes from the initial project meeting with the Planning Inspectorate.



This page is left intentionally blank.



The Planning  
Inspectorate

## Meeting note

<b>File reference</b>	N/A
<b>Status</b>	<b>Final</b>
<b>Author</b>	
<b>Date</b>	25 January 2018
<b>Meeting with</b>	Boston Alternative Energy Facility
<b>Venue</b>	Temple Quay House, Bristol
<b>Attendees</b>	<b>The Planning Inspectorate</b> (Infrastructure Planning Lead) (Case Officer) (EIA and Land Rights Manager) <b>Boston Alternative Energy Facility Limited</b> (Royal HaskoningDHV (Project Manager and EIA Lead)) (Lichfields (Planning)) (Athene Communications (Consultation)) (Eversheds Sutherland (Legal))
<b>Meeting objectives</b>	Inception meeting
<b>Circulation</b>	All attendees

### Summary of key points discussed and advice given:

#### Welcome and introductions

The Applicant and the Planning Inspectorate (the Inspectorate) case team introduced themselves and their respective roles. The Inspectorate continued by outlining its openness policy and ensured those present understood that any issues discussed and advice given would be recorded and placed on the Inspectorate's website under section 51 of the Planning Act 2008 (PA2008). Further to this, it was made clear that any advice given did not constitute legal advice upon which the Applicant (or others) can rely. The Applicant was made aware that, in accordance with the guidance set out in the Inspectorate's Prospectus for Applicants, the publication of the initial meeting note could be delayed for up to six months or until a scoping request had been made.

#### Proposed development

The Proposed Development will be located at the Riverside Industrial Estate south of Boston and consist of the following components:

- 96 MW energy from waste gasification plant;

## 25.01.2018 Minutes from the Planning Inspectorate meeting

- Import and export wharf;
- Waste reception and storage facility;
- Lightweight aggregates manufacturing plant and;
- Grid connection for 80 MW export to the grid.

The plant will run off Refuse Derived Fuel which is expected to be delivered by ship. The ash remaining can be used in the aggregates industry. It is intended to be processed onsite before being exported as a product by ship. The plant will be carbon and heat capture ready. The plant will use air cooling and the steam generation is via a closed system that does not need any ongoing water abstraction. The existing site is mostly scrubland with some areas of hard-standing. The Applicant's initial surveys indicate that no protected species are present within the site and there is limited suitable habitat for protected species. The closest residential dwellings are to the east across the Haven. As the river is tidal where the proposed wharf facility will be located, the Development Consent Order is expected to include a Deemed Marine Licence. The Applicant informed the Inspectorate that it may need to divert a public right of way along the riverbank in order to facilitate safe passage while enabling operation of the proposed wharf.

The Applicant confirmed that the technology it intends to use for the generating station is well established globally and they do not consider the nature of the proposed technology to be an obstacle to obtaining an environmental permit(s) from the Environmental Agency to operate the Proposed Development.

### **Scoping**

The Applicant confirmed that they had started drafting the scoping report and they intend to submit it in March 2018. The Applicant was advised to review [Advice note seven: EIA: Process, Preliminary Environmental Information](#) before submitting the scoping report and to clearly set out the aspects and matters it considers can be scoped out along with the reasons to support that approach. It was agreed that a site visit could be arranged shortly before or in the early stages of the scoping process if requested.

### **Consultation programme**

The Applicant intends to hold two rounds of consultation during 2018. The first round planned for the spring of 2018 will be non-statutory. The statutory consultation is scheduled for Q2/Q3 2018. The Applicant was advised not to conduct any other consultation activities during the scoping process as this will avoid any potential confusion with the scoping consultation bodies.

The Applicant has not begun to engage with the project's statutory consultees but it has identified various local stakeholder groups which they would soon be engaging with.

The Applicant has produced a draft Statement of Community Consultation document which will be discussed with the host authority shortly.

### **Compulsory Acquisition and Crown Land**

The Applicant has secured a lease for the vast majority of the land required for the project. The Applicant informed the Inspectorate that the land needed for the wharf



facility might be Crown Land. It was confirmed that the Applicant has not yet approached the Crown Estate with regard to the leasing of this land. The Inspectorate highlighted the benefits of early engagement with the Crown Estate in terms of leasing Crown Land.

### **Draft documents review**

The Inspectorate set out the timescales for the voluntary drafts documents review process. It was clarified that the review could be targeted to specific documents if requested by the Applicant.

### **Anticipated submission date**

The Applicant indicated that they were currently aiming to submit the application in late 2018/early 2019. The Inspectorate advised the Applicant that its timescales seemed ambitious given the stage they were at currently. The Inspectorate highlighted to the Applicant the need to ensure that sufficient time was provided during the pre-application process to ensure effective consultation could take place. This could then lead to shorter and more efficient examinations.

### **Meetings**

The Applicant was informed that the current practice is to hold face to face meetings after any major project milestones and to hold teleconferences in between if necessary.

### **Any other business**

The Applicant was advised to be clear in its traffic assessment how much waste could potentially be transported via the road network and how this would be controlled in the draft Development Consent Order.

The Applicant informed the Inspectorate that its approach to the Rochdale envelope may consist of giving building maximum and minimum limits of deviations, applying the principles used in the Ferrybridge 2 Multifuel 2 Power Station Order 2015. The Inspectorate advised the Applicant to be clear in its visualisation of the proposals so the stakeholders could understand what the project was likely to look like when built, and the potential impacts of the project could be appropriately considered and assessed.

The Applicant confirmed that there are flood defences currently in place close to the proposal site, and assessment would be carried out in this regard.

## REPORT

# **Boston Alternative Energy Facility - Appendix 3.2**

Appendix 3.2 Minutes from meetings with statutory consultees, local authority officers and councillors

Client: Alternative Use Boston Projects Ltd  
Planning Inspectorate Reference: EN010095  
Document Reference: 5.1  
Pursuant to: Section 37(3)(c) of the Planning Act 2008  
Reference: PB6934-ATH-ZZ-XX-RP-Z-3003.2  
Status: Final/0.0  
Date: 23 March 2021





Appendix 3.2 Minutes from meetings with statutory consultees, local authority officers and councillors

This appendix contains copies of minutes from meetings with statutory consultees, local authority officers and councillors, where available.



This page is left intentionally blank.



**Meeting Notes**

**HaskoningDHV Nederland B.V.  
Industry & Buildings**

Present: [Redacted] (Alternative Use Boston Projects Ltd); [Redacted] (Royal HaskoningDHV); [Redacted] (Landlord); Gary [Redacted] (Port of Boston)

Apologies:

From: [Redacted]

Date: 08 February 2018

Location: Proposed wharf location, Riverside Industrial Estate, Boston

Copy: N+P Ltd

Our reference: PB6934-RHD-01-ZZ-MI-E-1002

Classification: Project related

Enclosures:

**Subject: Boston Alternative Energy Facility – proposed wharf – introduction meeting with Port of Boston**

Number	Details	Action
<p><b>1 Project Description</b></p>	<p>Discussion held on the bank of the flood defence from the northerly point of the proposed location of the wharf frontage. An introduction to the overall project was provided to the Port of Boston Representatives as follows:</p> <ul style="list-style-type: none"> <li>• The Gasification unit facility will comprise 3 lines manufactured by an American company – Outotec.</li> <li>• The facility requires a Development Consent Order (DCO), so will be determined by the Secretary of State, not via the local planning regime.</li> <li>• The fuel will be household-type waste, known as RDF and there will be approximately 1,000,000 tonnes per year, sourced from elsewhere in the UK.</li> <li>• RDF supply will be from UK sources and will arrive by ship in bales.</li> <li>• The facility will need a new wharf for the ships to dock and unload the RDF bales for temporary storage then transfer by conveyor or truck to a waste processing facility.</li> <li>• The waste processing facility would split open the bales and shred the RDF to an appropriate size and remove inert contraries.</li> <li>• The shredded RDF would be fed into the gasification bunker by conveyor to generate energy via steam in the boiler.</li> <li>• The ash from the facility would be transferred into a lightweight aggregate manufacturing plant to make aggregate.</li> <li>• The aggregate is proposed to be transferred back to the wharf for removal to appropriate markets via ship.</li> </ul>	



Number	Details	Action
--------	---------	--------

	<p>■■ explained that the project is confidential until formal consultation is instigated by PINS (see section 2 below).</p> <p>■■ will email the outline project description to Port of Boston.</p> <p>A copy of the indicative site boundary was provided to Port of Boston representatives.</p> <p>It was explained that the zones marked on the plan are illustrative only and don't demarcate the predicted extent of any of the proposed development features.</p> <p>■■ identified that it would make sense for the wharf offloading facilities to be located as close to the waste processing facility to facilitate a more rapid transfer.</p> <p>■■ identified that we are in the early stages of consideration of the wharf features and were open to comments on requirements from the Port of Boston.</p> <p>The proposed red-line boundary of edge of the Wharf follows the line of the mean high water spring (MHWS).</p> <p>■■ identified that there will need to be an in-depth geomorphological examination of sediment processes to assess impacts of any proposed wharf design.</p> <p>It is proposed that the wharf would be approximately 300m long to accommodate two vessels.</p> <p>■■ identified that the current metrics for the scheme were based upon seven vessels per week (but not necessarily one per day), each capable of carrying 3,500 tonnes. With each bale having a mass of 1 tonne and a volume of 1.6m<sup>3</sup> this would mean each vessel would need a capacity of at least 5,600m<sup>3</sup>.</p> <p>Note – GB used the term 'barge' in terms of the vessel used to transfer the RDF to the site. This was corrected by Port of Boston representatives to refer to a ship.</p> <p>■■ identified that the wharf positioning must ensure that docked ships do not impede the movement of other vessels on the Haven. ■■ agreed that the berths would probably have to be NAABSA, as it would be difficult to maintain sufficient water depth for the vessel to remain afloat at low tide.</p>	<p>RHDHV ■■■ 16/02/2018</p>
--	---------------------------------------------------------------------------------------------------------------------------------------------------------------------------------------------------------------------------------------------------------------------------------------------------------------------------------------------------------------------------------------------------------------------------------------------------------------------------------------------------------------------------------------------------------------------------------------------------------------------------------------------------------------------------------------------------------------------------------------------------------------------------------------------------------------------------------------------------------------------------------------------------------------------------------------------------------------------------------------------------------------------------------------------------------------------------------------------------------------------------------------------------------------------------------------------------------------------------------------------------------------------------------------------------------------------------------------------------------------------------------------------------------------------------------------------------------------------------------------------------------------------------------------------------------------------------------------------------------------------------------------------------------------------------------------------------------------------------------------------------------------------------------------------------------------------------------------------------------------------------------------------------------------------------------------------------------------------------------------------------------------------------------------------	---------------------------------

Number	Details	Action
	<p>█ confirmed that the maximum length of vessel was 119m, which was the maximum size that could be turned. This was done in the basin. While the maximum draught was 5.5m, (max draught accepted at port has been 6.2m) a vessel of this draught could only access the port at Spring tides. At neap tides the maximum draught was around -3.5m. The minimum depth of the Haven was about -3.7m ODN, though the Port did not declare a depth.</p> <p>█ stated that it is unlikely that there would be a suitable ship that could take 3,500 tonnes of RDF up the Haven – a smaller ship would be more suitable. However, this is very much dependent upon vessel characteristics, length, beam, draught. Therefore, 3,500 tonne shipments should not be discounted without investigations into what vessels are on the market. On completion of the Boston Barrier Project in 2020 opportunities to discuss different size of vessels may well be available.</p> <p>█ indicated that there should not be a problem to accommodate an additional seven vessels per week in terms of the capacity of the navigation channel and turning ships.</p> <p>█ indicated that the port received approximately 400 vessel movements per year.</p> <p>█ stated that the ships would not be able to turn at the point of the proposed wharf, but would be able to turn either in the turning circle outside of the Port of Boston dock; or more likely within the dock itself.</p> <p>█ indicated that the Haven is surveyed periodically and the survey data could be made available to us.</p> <p>█ indicated that the Port of Boston has a licence to dredge 60,000 tonnes per annum, but they routinely only dredge approximately 30,000 tonnes. There is no maintenance dredging required along the location of the proposed wharf because of the dynamics of the flow of the river.</p> <p>█ advised that the Port has a tug. Vessels over 2,400 Gross Tonnage were required to use a tug.</p>	
<b>2 Next steps</b>	<p>█ explained that there was a defined and extensive programme of consultation required by the Planning Inspectorate (PINS).</p> <p>Meeting with PINS was held on 25<sup>th</sup> January.</p>	

Number	Details	Action
	<p>A formal scoping report would be submitted in a few weeks to identify which topics were likely to have significant impacts and which could be scoped out of assessment.</p> <p>When this is submitted, PINS have 42 days to respond, during which time they would formally approach consultees, including Port of Boston, for a response.</p> <p>An extensive environmental impact assessment would follow, combined with public meetings, with a view to an application being submitted at the end of the year.</p> <p>PINS would then determine the application including examination and decision processes, with an anticipated DCO decision mid 2020.</p> <p>After that there would be a period to discharge the DCO requirements and a 36 month construction period.</p> <p>█ requested that an indicative programme is provided to the Port of Boston so that they can be aware of key milestones.</p>	<p><b>RHDHV █ to provide. (16/02/18)</b></p>
<p><b>3. Other</b></p>	<p>A 90m, 3.4m draught vessel passed by as the meeting and site visit progressed. Cargo was approx. 1,900 tonnes. This is a useful benchmark of ship that could be used to transport the RDF.</p> <p>See below</p>	





**Number**

**Details**

**Action**





**Note / Memo**

**HaskoningDHV UK Ltd.  
Industry & Buildings**

To: , [REDACTED],

From: [REDACTED]  
Date: 20 March 2018

Copy: [REDACTED],  
Our reference: PB6934-RHD-01-ZZ-MI-E-1006  
Classification: Project Related

**Subject: BAEF - Meeting Notes - Lincolnshire County Council Meeting - 14/03/2018**

---

Notes for preparation of meeting.  
Lincolnshire County Council, Lancaster House  
Orchard Street  
Lincoln LN1 1XX

14<sup>th</sup> March 2018.  
In attendance;

- Planning Manager Lincolnshire County Council
- Planning team leader
- [REDACTED] - Royal HaskoningDHV
- [REDACTED] - Athene Communication  
– Lichfields

[REDACTED] introduced the Boston team and its purpose. [REDACTED] added that a meeting had been held with PINS recently to kick start the process of preparing for a DCO submission. [REDACTED] identified that we had met with Port of Boston.

[REDACTED] mentioned that he and [REDACTED] had been visited 18 months ago by a group who were looking to make a submission for a scheme which also fell within the scope of a DCO submission, though this never materialised.

[REDACTED] asked if the applicant team had experience of DCO schemes. The County Council had experience of Triton Knoll off shore windfarm and West Burton power station.

[REDACTED] described the scheme with reference to a power point presentation (attached with these notes) explaining the arrival of RDF by ship, its subsequent handling and processing.

[REDACTED] asked if the fuel source would be domestic refuse. [REDACTED] confirmed that the fuel source would be residual RDF with recycle removed. This material is presently being shipped to the continent as a fuel source. NM commented that the North Hykenham EFW was at capacity and that other takers were being sought.

[REDACTED] described the need for performance guarantee and specification of the feedstock from supplier. The Plant would rely wholly on RDF. The BAEF will be separately operated from Boston 1, so both could end up using a RDF feedstock (from different sources).

■ confirmed that an Environmental permit will be required.

■ confirmed that all the material would be brought in by ship and would provide economic benefit to the port.

There would be some element of pre-processing of the RDF after being received at the site. This would be shredding to size and removal of inert material.

The ash from the gasifier (including the hazardous air pollution control residues from the stack) would be used to produce aggregate on site. The gasification plant would generate approximately 250,000 tonnes of ash (i.e. approximately 25% of the RDF input quantity) to be converted in to aggregate, which would be exported by boat.

Anticipated that there would be 8 return ship movements per week.

The ash from the lightweight aggregates plant can be recycled back into the start of the process. This includes (air pollution control residues (APC). However, after several cycles, the APC residues will become concentrated with contaminants and will have to be disposed. Only a very small proportion of the APC residues from the lightweight aggregates plant would need to be exported from site for disposal (by road). Quantity will be confirmed.

Odour control will be applied to the waste processing facility and the reception bunker for the gasifier. These would be at Negative pressure.

We confirmed to LCC that there was no water abstraction required from the Haven.

The Environment Agency is likely to require (via a permit condition) that RDF will not be stored for more than 5 days.

Carbon capture was not to be part of the DCO, but is a future proposed enhancement for the scheme.

■ asked what proportion of the UK market would this take. ■ advised that 3.6mt is being exported to the continent, so uptake would be 1/3 of this. GB confirmed that there is still a shortfall in capacity to use RDF as a fuel.

■ questioned if the aggregate was still marketable if it contained hazardous APC residues. GB confirmed that the lightweight aggregate process can accommodate APC residues, however, there will be a point where it cannot be recirculated and will require disposal. This will be a very low % of the input quantity. These residues would be disposed of at hazardous landfill. Transport by road.

Programme - ■ described the programme - still at an early stage.

■ confirmed that Scoping Opinion would be sent to PINS in April.

#### Allocation

■ confirmed that EfW had been specifically excluded from the allocation for the site in the adopted Locations Plan on the basis of potential impact on nature conservation interests to the south east/ east.

■■■ noted that we still had to meet with Boston Borough Council. He enquired as to who would take the lead in providing contact and producing a local impact report. because it was a 'waste' scheme he assumed the County would, but Boston may have a different perspective.

#### Consultation

■■■ confirmed that this was a key aspect. Frontloading of the process. SOCC to be produced. ■■■ and ■■■ set out the key timescales for submission of SOCC and response of PINS.

We would hold 2 x PIDS, the first after Scoping and the second before DCO application

■■■ said that there were lessons to be learnt from the Kings Lynn scheme. Need to engage with the local community.

SOCC had to be prepared. Advice on venues. Newspaper and gazette. Diverse community in Boston.

We discussed who the neighbouring authorities were with whom we have to consult – North Kesteven, East Lindsey and, South Holland.

Process to be open and transparent.

■■■ wished to have sufficient time to respond on the any draft scoping report prior to submission (1 month) . If 1 week was allowed, they wouldn't be able to say too much in response.

LCC stated that residents and stakeholders would be interested in the cumulative impacts of both Boston 1 and 2

LCC stated that we might require PINS comment on DCO with two-tier authority consultation and impact report. We may want to consider providing briefings to Ward Councillor, MPs and the planning committee in advance of any formal submission

County Council actions. LCC were keen on adopting a Planning performance agreement. We identified that we would need to speak with client team about this.

NMc need to agree points of contact with us and will provide contact details for his Community Engagement team

Post meeting question between JS/ES/GB – do we provide a copy of the slides to LCC? Response was that we should not do so, until the project is publicly announced.



**Technical Note**

**HaskoningDHV UK Ltd.  
Industry & Buildings**

To: \_\_\_\_\_, Western Power Distribution  
From: \_\_\_\_\_,  
Date: 28 March 2018  
Copy: \_\_\_\_\_,  
Our reference: PB6934-RHD-01-ZZ-TN-E-1002  
Classification: Project Related

**Subject: Boston Alternative Energy Facility –Scheme Overview**

---

Dear

Following the meeting on 22 March 2018 at Western Power Distribution's (WPD) office in Grantham, please find attached the description of the Boston Alternative Energy Facility (BAEF). The scheme overview below outlines the purpose of the BAEF and what it is aiming to achieve. I have also identified the key steps to date and the proposed timescales for delivery.

Also attached are the relevant points relating to Harlaxton Engineering's requirements to energise the scheme and connect to the grid.

## **1 What is required**

We require that the deadline for energisation of the current proposed grid connection point is extended to meet the proposed consenting programme for the BAEF scheme.

The purpose of the information provided below is to confirm that the scheme is real and progressing to a programme that is dictated by the consenting programme according to the Planning Act 2008

## **2 Scheme Description**

BAEF is a proposed energy recovery plant which will use household waste to deliver 96 MW gross, with a proposed export of 80MW of renewable energy to the national grid.

The proposed facility will generate over 50MW of energy, therefore it is a nationally significant infrastructure project (NSIP), and needs a Development Consent Order (DCO) under the Planning Act 2008. The DCO application will be submitted to the Planning Inspectorate (PINS), who will determine the application.

BAEF will be developed and funded by Alternative Use Boston Projects Ltd, (AUBP), a privately-owned company with a solid track record in delivering energy from waste facilities. Members of the project team worked with the original developer on the waste wood gasification plant which is currently under construction at Riverside Industrial Estate.

The BAEF Project Team that is supporting AUBP comprises:

- Eversheds Sutherland – Legal
- Lichfields – Planning



- Athene Communications – Communication and Stakeholder Engagement
- Royal HaskoningDHV – Project Management and Environment.

The Project Team has an extensive track record in delivering DCO schemes.

The proposed development will be located adjacent to Riverside Industrial Estate on the bank of the Haven in Boston, Lincolnshire. The facility will treat approximately one million tonnes of waste annually via a gasification process. Gasification is a technology that uses a high temperature chemical conversion process to convert waste into synthetic gas which in turn will be used to produce electricity. When in operation, BAEF will generate enough energy to power up to 185,000<sup>1</sup> UK homes.

The household-type waste that is used for fuel is known as Refuse Derived Fuel (RDF). This comprises residual material that cannot be recycled further from waste recycling facilities. It will be supplied from UK sources and will be sent to the facility by ship. This waste is currently shipped abroad therefore the UK is losing the benefit of the energy potential from this material to European facilities. We will build a purpose-built wharf to accommodate approximately seven ship movements a week to deliver the RDF material to site. RDF will not be sent to the site by road.

The gasification process will convert most of the RDF into energy. There will be some residual material left over in the form of an ash-type material. This will be removed and processed on-site to create a lightweight aggregate, which can be then used for construction projects. This lightweight aggregate will be removed by ship.

BAEF will create between 200 and 300 jobs during construction and around 80 new jobs once operational.

The DCO application for the proposed BAEF project will include the new wharf to receive the RDF and export the aggregate, waste reception and treatment facility, the gasification facility and a lightweight aggregate plant. In addition, temporary works and associated infrastructure necessary for the construction and operation of the project shall be included.

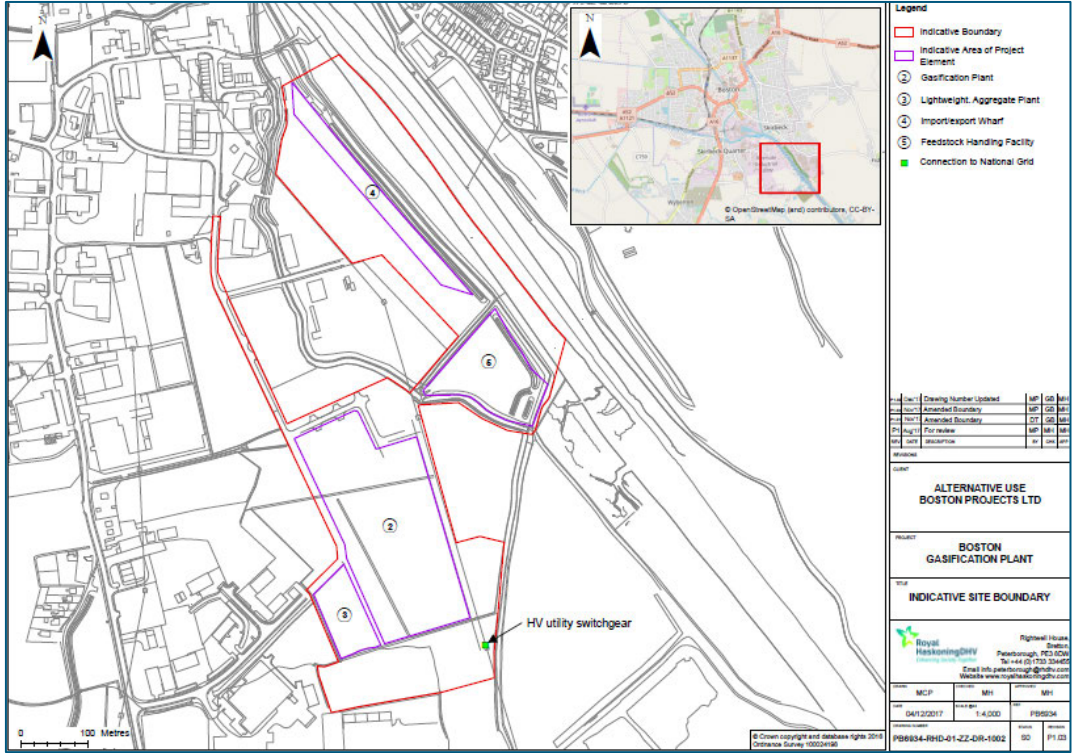
---

<sup>1</sup> The 2011 Census identifies that the average UK house uses 3.1MW energy in a year. So, as an approximation, if the facility is operating at 300 days per year, 80 MW hour export would be equivalent to  $(300 \times 80 \times 24) / 3.1 = 185,000$  homes (185,806).



## 2.1 Site Location

BAEF is proposed to be located at the Riverside Industrial Estate adjacent to the Haven in Boston, Lincolnshire (see **Figure 1**).



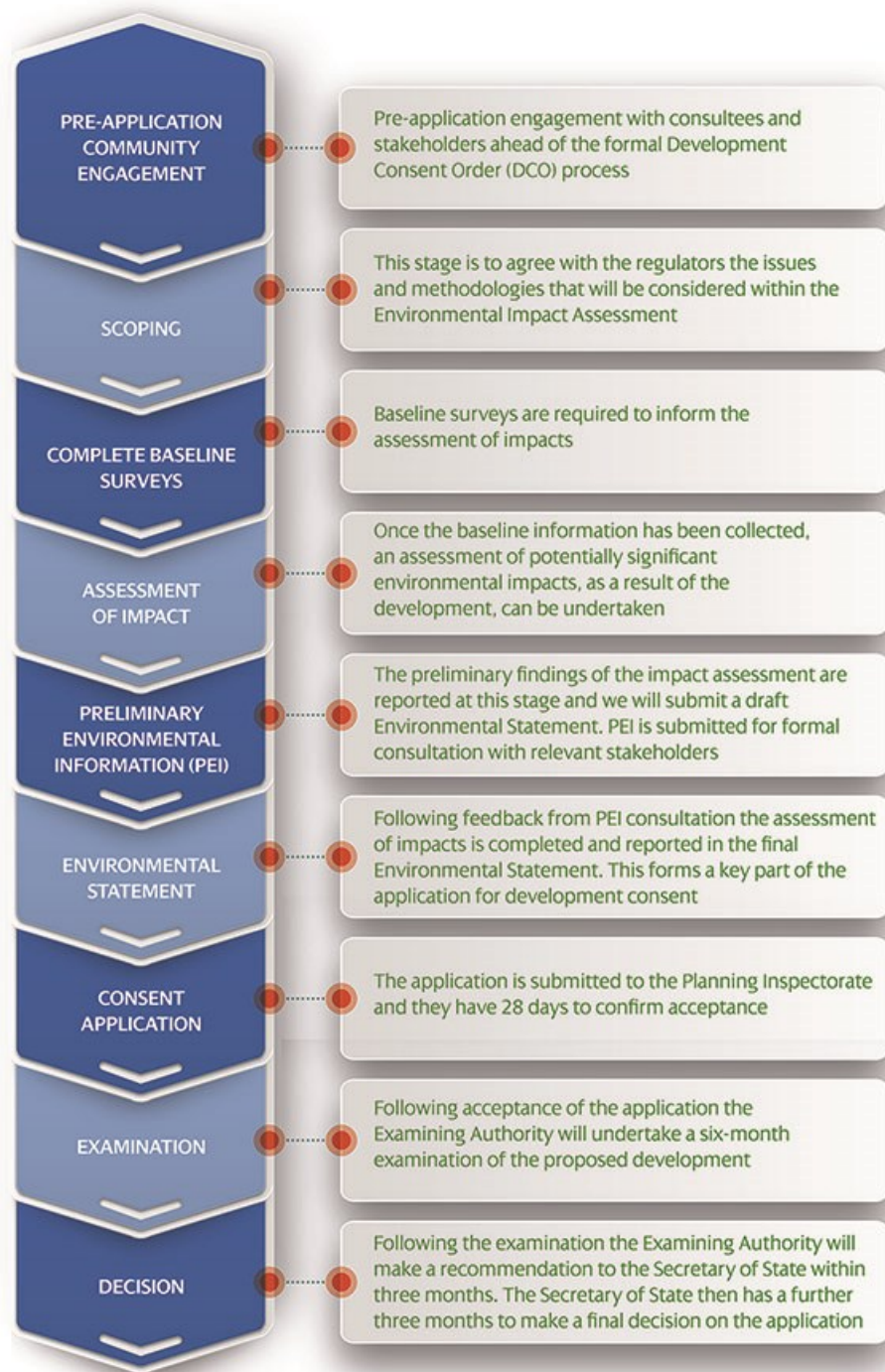
**Figure 1 – Indicative Red line boundary and site location**

A separate copy of the indicative redline boundary is provided with this Note.



### 3 Programme

The following figure identifies the steps in the DCO consenting process.



**Figure 2 – DCO consent process**

The proposed timings associated with these steps is provided in the minutes of the meeting 22 March 2018, which is provided as Annex 1 to this Note.





The BAEF project is at the end of the preliminary stage leading to submission of the Scoping Report to PINS.

## **4 Key Milestones to date**

### **4.1 Pre-application community engagement**

The BAEF project team has begun the process of pre-application engagement. Meetings have been held and are due to be held with several significant statutory stakeholders to introduce the scheme and be aware of the aims and purpose of the scheme prior to a formal submission of the scheme to the Planning Inspectorate (PINS).

#### **4.1.1 Consultation Objectives**

The consultation objectives are to consult widely, honestly and in several phases – to allow representations to be incorporated into the project and influence the project where possible.

PINS guidance on the pre-application process advocates that early involvement of local authorities and statutory consultees can bring about significant benefits for all parties.

The BAEF Project Team are working on the delivery of the Statement of Community Consultation (SoCC) which will define the approach to consultation.

The aim of the SoCC is to clarify the development programme, lines of communication and means of engagement with statutory stakeholders, non-statutory stakeholders and interested parties. During the determination of the application, BAEF will be measured against the commitments made in the SoCC. It is therefore a critical document in the development process.

The consultation process will focus on the details of the proposed DCO application. This will include:

- Details of the project proposals and parameters;
- Preliminary Environmental Information (PEI) that has been gathered and how this has informed and affected the design;
- Boston Alternative Energy Facility's proposals for maximising positive effects; and
- Minimising and mitigating any adverse effects on the local community or environment that could be caused by the project

Following the publication of the SoCC, BAEF will progress through the development phase, including providing a Scoping Report which contains our proposed approach to the Environmental Impact Assessment (EIA) for the proposed project. This is required to identify the issues and methodologies that will be considered in the EIA. The Scoping Report is expected to be submitted to PINS in April 2018.

#### **4.1.2 Pre-Scoping Meetings**

In addition to the meeting with WPD on 22/03/2018, the BAEF Project Team has met with the following stakeholders:

- An inception meeting was held with PINS in January 2018;



- A site visit and preliminary meeting with the Port of Boston took place in February 2018; and
- A meeting took place with Lincolnshire County Council in March 2018.
  
- Meetings have been arranged with Boston Borough Council and the Environment Agency in the first week of April 2018.

Contact has also been established with the Crown Estate, the Marine Management Organisation and Natural England, with a view to pre-scoping engagement.

We will be publishing a project brochure giving high level details of the proposed project and providing contact details for consultee engagement. Additionally, a website will be created showing details of the project and frequently asked questions. This website will be updated as the consultation process progresses.

## 4.2 Site characterisation and baseline environmental surveys

The BAEF Project Team has initiated pre-scoping environmental baseline assessment work for several key environmental topics. Surveys and preliminary reports have been produced for:

- Land Quality and Ground Conditions
- Ecology
- Landscape and Visual Impacts; and
- Noise and vibration.

A pre-scoping report has also been produced to identify potential high-level impacts for the scheme across all of the relevant potential environmental topic areas.

These studies have informed the development of the Scoping Report, which will be submitted to PINS in April 2018. This will formally start the 'clock' for the programme of the DCO process described above.

## 5 Energisation

A detailed programme of Connection Works has not yet been finalised pending approval of the extension of time to conclude the DCO process and further discussions taking place with WPD OHL experts.

It is envisaged that upon approval of the DCO (anticipated Feb 2019) a suitable and specific form of engagement and project planning will be formed with regards to the connection in terms of methodology, design and specific milestones.

If you have any further questions, please contact us:

**BAEF Project Team:**

██████████  
Associate Director  
Royal HaskoningDHV

**BAEF Energisation**

Harlaxton Engineering Services

[@harlaxton.com](http://harlaxton.com)

E: ██████████@rhdhv.com



**Technical  
Note**

**HaskoningDHV UK Ltd.  
Industry & Buildings**

To: [REDACTED], Western Power Distribution  
From: [REDACTED],  
Date: 28 March 2018  
Copy: [REDACTED],  
Our reference: PB6934-RHD-01-ZZ-TN-E-1002  
Classification: Project Related

**Subject: Boston Alternative Energy Facility –Scheme Overview**

---

Western Power Distribution,  
Isaac Newton Way,  
Grantham  
NG31 9SD

22<sup>nd</sup> March 2018.

In attendance;

- [REDACTED] System Design Engineer – Western Power Distribution.
- Overhead Line Engineer – Western Power Distribution
  - Consents and Planning - Western Power Distribution
  - Project Manager - Western Power Distribution
- [REDACTED] – Alternative Use Boston Projects Ltd
  - Harlaxton Engineering
  - Harlaxton Engineering
- [REDACTED] – Royal HaskoningDHV
- [REDACTED] - Royal HaskoningDHV

The team from Western Power Distribution (WPD) briefly explained who they were and what role they would play in the project.

[REDACTED] introduced the purpose of the meeting, which was to discuss the Development Consent Order (DCO) timescale of the proposed Boston Alternative Energy Facility (BAEF) which is dictated largely by the fixed timescales set by PINS and what impact this has on the current site connection, which is subject to a time-limited agreement with WPD.

[REDACTED] identified that the current timescale for site energisation does not align with the DCO process and we are looking to extend without losing the connection.

[REDACTED] introduced the Boston team and its purpose and described the project and what will form part of the scheme. He identified that the scheme is real and has already passed established milestones (site characterisation and environmental risk identification, meetings with the Planning Inspectorate (PINS), Lincolnshire County Council and the Port of Boston) and is close to the next significant DCO milestone, which is the submission of the Environmental Scoping Report (ESR) to PINS. The ESR report sets out our opinion of what the anticipated significant impacts will be and how they are proposed to be managed. The grid connection is an important part of the scheme and it is important to clarify the location of this at Scoping stage. If this cannot be achieved the Scoping Report will have to indicate that an off-site option is required.



identified the project timescales as follows:

Step	Timescale	Comments
Pre-application phase	Ongoing To Dec 2018	Scoping Submission – April 2018 Submit scoping report – PINS has 42 days to respond. Consultation with Statutory Stakeholders. Preliminary Environmental Report. Stakeholder consultation and public sessions, Consultation report. Environmental Statement Report. Further round of Consultation and events, finalise consultation report. Prepare DCO application and the draft DCO.
DCO Submission	December 2018/Q1 2019	
Acceptance	Feb 2019	Planning Inspectorate has 28 days from submission to decide whether the application meets the required standard to proceed to Examination
Pre-examination	Mar 2019 to Jun 2019	3 to 6 months (usually three/four = four assumed for this timeline) Includes 28 days for relevant registration; and 2-3 months for registration of interested parties. (IPs) Drafting examination timetable
Examination	Jul 2019 to Dec2019	Maximum 6 months Starts with a preliminary meeting Written representation and hearings
Recommendation	Jan 2020 to Mar 2020	Recommendation to Secretary of State. 3 months
Decision	Apr 2020 to Jun 2020	Secretary of State determination and decision. 3 months
Post-decision	Jun 2020 to July 2020	6 week Judicial review period, with potential for legal challenge. 6 weeks
Discharge of Requirements and DCO obligations	July 2020 to March 2021	Pre-commencement requirements can take 6-9 months Secure consent for environmental permit
Construction of first Line	April 2021 to end Feb 2024	34 months
Construction of second line	Mar 2024 to end Aug 2024	+ 6 months from above to completion
Construction of third line	Sep 2024 to end Feb 2025	+ 6 months from above to completion
First generation of energy for export	Feb / Mar 2024	Based upon the commissioning assumption above.



The shaded cells are stages that are fixed by the DCO process and will not be shortened.

████ identified that Harlaxton would develop the infrastructure to energise approximately 6 months before the completion of construction of the first line = September 2023.

WPD agreed to discuss the potential to extend the connection point to meet the required DCO timescales. This was subject to the following:

**Action: RHDHV (████) to provide █████ with a description of the scheme; evidence of progress to date; DCO timescales; progress of connection and history of connection discussions (this note).**

**Action by:**

- █████ to provide draft DCO outline discussion to █████.
- █████ to supply information regarding connection
- █████ to send to WPD by Thursday 29<sup>th</sup> March, ensuring █████ is copied in
- █████ to inform WPD management
- **Response anticipated within 10 working days.**

WPD (████) identified that the current connection is a non-firm connection. This means that it would be subject to planned outages that would mean loss of connection in operation. They wanted to ensure that this was known to the project.

████ identified that this does not affect the DCO application, but it is a fundamental part of Operation. WPD identified that a Firm connection would guarantee connectivity, however, it would mean a new connection agreement and the current agreement would be lost, with no guarantee of a connection at the site within the relevant timescales.

WPD identified that it would be possible to apply for a firm connection after the current connection proposal was energised, however, the system and infrastructure would need to be designed to accommodate this.

WPD also identified that under a realistic worst-case situation, an additional overhead tower may need to be constructed by WPD to manage the connection to the grid system.

████ identified that they would undertake liaison with WPD and design the infrastructure to try to prevent this where viable, however, it may be prudent to include it as its inclusion cannot be guaranteed.

████ identified that if reasonably required this should be within the DCO Scoping parameters as a cumulative consideration (and a consequence of the scheme).

## 03.04.2018 Meeting minutes with Boston Borough Council

### Meeting with BBC

3/4/18

Present

■ – – yes

■ – is the intention that an application goes in and then consultation begins – no scoping goes in then formal consultation begins

Compliant with IED standards (industrial emissions directive)

Wharf anticipated to be 300m long

Building height around 25-30m high

Stack height won't be higher than the St Botolph's

Stack for gasification facility and light weight aggregate plant

3 x 32mw facilities side by side

Anticipating a seal conveyer to move waste from reception to facility

■ - Is it stopping waste going to landfill

■ – what cannot be recycled – what it is that will go to the facility

■ – meeting them on Friday 6/4

■ - How high will the grab cranes be – similar scales to the port facility

■ – how will the recycle be taken off site

8,000 hours operating a year

80mw net – 16mw to run the facility

Submission prior to Q1 2019 (calendar year)

■ – PINS timescales are slipping. Let's hope they give priority to NSIPS

■ – what capacity have you spoken to LCC

East Lindsey, South Holland – key stakeholders

Would we have an input to any justifiable wish list in respect of S106 – yes

Negotiating with applicant and putting agreed opinion to PINS

2024 for operation (34-month build)

200-300 jobs and 80 construction jobs

## 03.04.2018 Meeting minutes with Boston Borough Council

Timescales work with other projects to move workforce – dovetailing rather than being in competition

Difficult to get hotel accommodation – squeeze on accommodation

Working with local education providers to fill jobs in lead up to 2024 – skills development – working with schools/colleges

Apprenticeship development – working with college to provide throughput to employees

■ -Workforce development issue – potentially one of the biggest breaks – matching workforce development with a wider housing offer – attracting people who are a different socio-economic class – almost in a chicken and egg situation – we have some of the biggest major projects coming on stream in the east of England

Housing – dependant on a small/medium house builders – not the national developers

Currently have 5,000 – 6,000 housing in line for being built

S106 – possible apprenticeship agreements

The sooner the wider membership the better – keen to engage with leading members not from planning – detailed information sharing, knowledge of the application, Boston Area Town Committee – not necessarily formal – those that sit on the committee – those that represent the Ward

Big, exciting application, significant – sits on a site that comprising that has a large number of food production businesses – the new waste recycling facility created some difficulty for some of the larger employers

What can we say to whom and when

Get the right message out there in a controlled way

■ – the EfW plant locally is running at capacity – how can we get the local waste in somewhere else – because of the housing numbers our numbers are modest – local EfW plant does not meet requirements – so we are looking at alternative recycling facilities in Lincs. IF we do get to that stage South Lincs would be sensible – bizaree that you are importing waste when we produce more than we can cope with – conversation with waste disposal – could it be a solution to our problems -Should be a conversation about how it could help/be to difficult so that it can be eliminated if necessary

Is the product one that can be used?

Lincs Waste Authority – could they have a view to respond? – Make sure added to non-stat list

■ liaising with the Leader



**Minutes**

**HaskoningDHV UK Ltd.  
Industry & Buildings**

Present: (Area Environment Management Officer),  
(National Environmental Permitting Service), (Land Contamination &  
Groundwater Officer), (Flood Risk Management) and  
(DCO/Planning process). [REDACTED]

Apologies:

From: [REDACTED]  
Date: 06 April 2018  
Location: Ceres House, 2 Searby Rd, Lincoln LN2 4DT  
Copy:  
Our reference: PB6934-RHD-01-ZZ-MI-E-1010  
Classification: Project related  
Enclosures:

**Subject: BAEF Pre-Scoping Meeting with the Environment Agency – 06/04/18**

Number	Questions raised/Comments by the Environment Agency	Action
1	<p>[REDACTED] asked about tonnage for the ships and processing capacity. GB responded with approximately 3,000 to 3,500 tonnes and a processing capacity of one ship load a day. Approximately 8 ships a week.</p> <p>[REDACTED] asked where the RDF would be coming from. [REDACTED] confirmed that there were 3.6 mt presently being exported to Europe. It was intended to divert part of this outflow to the Boston scheme. The RDF being generated from UK sources, not necessarily from Lincolnshire. [REDACTED] mentioned that discussions with Lincolnshire and Boston councils had confirmed that the Hykenham plant was now at capacity. They identified that the MRF next to the proposal site could provide a source of RDF to the plant, but this conversation had yet to be had with the client.</p> <p>There will be a capacity for 1 million tonnes per year (Three-line facility).</p> <p>[REDACTED] asked if there would be the same company operating each part of the site? [REDACTED] stated there would probably be one operator for the wharf; one for the waste processing facility and gasification plant; and another for the lightweight aggregate (LWA) facility. This would mean there would need to be multi-operator permits. [REDACTED] and [REDACTED] expressed a preference for a single operator, however, multi-operator permits are achievable.</p> <p>[REDACTED] mentioned that the process for creating aggregate pellets is only diluting hazardous waste. It would be dilution followed by solidification. This is not possible because it does not meet Best Available Techniques (BAT) for Air Pollution Control residues (APC). [REDACTED] – we want to use the APC waste in a recovery process to generate a product. This will mean only a very small amount of residual waste will need to be removed by road for disposal. This would be from the LWA where the gas treatment residues will contain concentrated hazardous substances if it is recycled back into the process. The process will be monitored to the point at which the hazardous waste cannot be cycled in and this material will be disposed.</p>	



<p> <b>█</b> + <b>█</b> –need to prove it is an appropriate waste management technique and need to meet BAT requirements. Must show the technique is appropriate and that hazardous substances are not just being diluted to meet specification for an end product.         </p> <p> <b>█</b> – the worst case is to only use the non-hazardous waste ash/char from the gasification plant in the LWA as they are collected separately from the APC residues in the gasification process. However, this will mean that the APC residues will need to be removed by road.         </p> <p> <b>█</b> asked if the LWA plant will use the syngas from the gasification plant?  <b>█</b> said it would not use the syngas but will use its own internal heat following initial start-up.         </p> <p> <b>█</b> asked what intention we have with the environmental permit applications?  <b>█</b> – we will develop these when we have consent in around 2020. We will have the information needed for permitting developed before this point. We are mindful of the technical requirements including modelling stack emissions.         </p> <p> <b>█</b> preferred twin tacking the permit application alongside the DCO consent process as per guidance.         </p> <p> <b>█</b> identified that the client wants surety on the consent before committing to permitting, which is common practice with developers.         </p> <p> <b>█</b> asked what the height of the wharf will be.  <b>█</b> replied that we have only developed a functional requirements layout and it is an evolving design.         </p> <p> <b>█</b> also asked what the life expectancy of the scheme is, as the flood defences will have to be raised to 7m in 25 years.         </p> <p> <b>█</b> suggested we would maintain have to maintain the current standard of flood protection as it is now; plus we would have to be mindful of any recommendations made by the EA with regards to the future requirements of the flood defences during the consultation process. And we will take the Boston Barrier development into account during the Environmental Impact Assessment (EIA) stage.         </p> <p> <b>█</b> asked if we were going to disapply any legislation or have a side agreement or any protective provisions?  <b>█</b> said that there has been no such measure at this point in time, but it may be something to discuss during the consent process and would be progressed through negotiation with the EA as appropriate.         </p> <p> <b>█</b> asked if this technology was used elsewhere as they had had a test plant in Northamptonshire that had taken household waste in but wasn't functioning.  <b>█</b> said that the manufacturer's website provided examples in Europe GB stated that this is an established technology and is operating in other parts of the world and is adaptable.         </p> <p> <b>█</b> mentioned that there had been a waste fire at the aforementioned test site.  <b>█</b>: The placement of RDF and fire protection will be a key consideration.         </p> <p> <b>█</b> was not convinced on the multi-operator site. And stated that we will need to know clearly the legal operators for each part.  <b>█</b> stated that it is because of the different technology providers.         </p> <p> <b>█</b> – the wharf could be viewed as a transfer station and part of the overall facility –         </p>
-------------------------------------------------------------------------------------------------------------------------------------------------------------------------------------------------------------------------------------------------------------------------------------------------------------------------------------------------------------------------------------------------------------------------------------------------------------------------------------------------------------------------------------------------------------------------------------------------------------------------------------------------------------------------------------------------------------------------------------------------------------------------------------------------------------------------------------------------------------------------------------------------------------------------------------------------------------------------------------------------------------------------------------------------------------------------------------------------------------------------------------------------------------------------------------------------------------------------------------------------------------------------------------------------------------------------------------------------------------------------------------------------------------------------------------------------------------------------------------------------------------------------------------------------------------------------------------------------------------------------------------------------------------------------------------------------------------------------------------------------------------------------------------------------------------------------------------------------------------------------------------------------------------------------------------------------------------------------------------------------------------------------------------------------------------------------------------------------------------------------------------------------------------------------------------------------------------------------------------------------------------------------------------------------------------------------------------------------------------------------------------------------------------------------------------------------------------------------------------------------------------------------------------------------------------------------------------------------------------------------------------------------------------------------------------------------------------------------------------------------------------------------------------------------------------------------------------------------------------------------------------------------------------------------------------------------------------------------------------------------------------------------------------------------------------------------------------------------------------------------------------------------------------------------------------------------------------------------------------------------------------------------------------------------------------------------------------------------------------------------------------------------------------------------------------------------------------------------------------------------------

<p>■ said maybe not as long as the wharf only receives waste to go to the gasification plant and no other waste for any other user or purpose.</p> <p>■ asked if we will use the Consent Service Unit and twin track with the DCO?          ■ said we would like to have it overlapping, but from a risk perspective we need certainty of consent.          ■ said that PINS will be looking for a letter from EA about the permits, which the EA cannot provide if the permit process has not started.          Suggests potentially re-considering this.</p> <p>■ – Need an air quality model for the stack.          ■ identified that this would be one several key topic areas that would need very detailed consideration in the EIA. The two stacks (gasification plant and LWA) will influence each-other and also the stack for the current Boston facility. Will need to identify that both processes meet technical standards in the Industrial Emissions Directive.</p> <p>■: Need an emphasis on stack height with a cost: benefit analysis.</p> <p>■ asked if there are any potential waste heat users for excess heat from the gasification facility in the vicinity?          ■ - potential that agricultural facilities could use this but it is not part of the DCO application – consideration further down the line.</p> <p>■ stated that the priorities should be:          Firstly, air quality;          Secondly, energy efficiency including a cost: benefit assessment of using waste heat elsewhere. Include this in environmental permit application.</p> <p>■ – Cost recovery – the EA now charge for the provision of non-statutory advice.          ■ we will look to develop the need for this with the EA and define what this will be in addition to the statutory response requirements.</p> <p>■ Permitting, pre-application, shift to national pricing structure</p> <p>Pre-application – 3 hours advice.          Online form – enhanced pre-application advice.          Set rate – around £100 per hour. Some technical advice commands a higher fee due to complexity.</p> <p>■ asked how we would go about informing them of the scoping report before they get it officially from PINS.          ■ said that we can send through the scoping report ASAP to her and that any extra time would be beneficial.          ■ suggested it would be towards the end of April.</p>
------------------------------------------------------------------------------------------------------------------------------------------------------------------------------------------------------------------------------------------------------------------------------------------------------------------------------------------------------------------------------------------------------------------------------------------------------------------------------------------------------------------------------------------------------------------------------------------------------------------------------------------------------------------------------------------------------------------------------------------------------------------------------------------------------------------------------------------------------------------------------------------------------------------------------------------------------------------------------------------------------------------------------------------------------------------------------------------------------------------------------------------------------------------------------------------------------------------------------------------------------------------------------------------------------------------------------------------------------------------------------------------------------------------------------------------------------------------------------------------------------------------------------------------------------------------------------------------------------------------------------------------------------------------------------------------------------------------------------------------------------------------------------------------------------------------------------------------------------------------------------------------------------------------------------------------------------------------------------------------------------------------------------------------------------------------------------------------------------------------------------------------------------------------------------------------------------------------------------------------------------------------------------------------------------------------------------------------------------------------------------------------------------------------------------------------------------------------------



**Minutes**

**HaskoningDHV UK Ltd.  
Industry & Buildings**

Present: [redacted] (RHDHV), [redacted] representing The Crown Estate), [redacted] (Eversheds Sutherland – by skype)

Apologies:

From: [redacted]

Date: 16 November 2018

Location: Carter Jonas, 82 Micklegate, York

Copy:

Our reference: PB6934-RHD-01-ZZ-MI-E-1016

Classification: Project related

Enclosures: PB6934-RHD-01-ZZ-PP-N-1010 TCE introduction - Presentation

**Subject: Crown Estates Meeting 16/11/2018**

Details	Action
<p>[redacted] outlined the main aspects of the proposed Boston project using a PowerPoint presentation (a copy is provided with the minutes):</p> <ul style="list-style-type: none"> <li>• There is a combined team working on the Boston Project working towards the delivery of the Development Consent Order (DCO) application.</li> <li>• The DCO is currently within the Preliminary Environmental Information Report (PEIR) stage.</li> <li>• The Boston Project team are talking to the Port of Boston about using dredged material as a binder material in the proposed Lightweight Aggregate Facility (LWA).</li> <li>• The impact of the Environment Agency’s (EA) Boston Barrier will be relevant to the proposed Boston scheme – engagement with the EA will form part of our stakeholder engagement.</li> <li>• Currently the Wharf area near the site is not dredged because when the Black Sluice gates are open, the force of the water flushes the navigable channel of the Haven. Dredging occurs further downstream and dredged material is taken to an offshore disposal point.</li> </ul> <p>[redacted] mentioned that the use of the dredged material for the LWA facility will depend on the rights of the Port of Boston. The Crown Estate may have a right to the sediment, so any proposed use may require permission and a beneficial use charge.</p> <p>[redacted] outlined the proposed wharf construction:</p> <ul style="list-style-type: none"> <li>• With regards to the current flood defence, to the proposed wharf would replace some of this with hard-line defence.</li> <li>• The new flood defence will be installed in sections to maintain the level of protection (essentially a relocation process).</li> <li>• Removing the material for the berthing pocket using water-based plant will be difficult. Access for commercial traffic to the Port can only happen around high tide so we do not want floating and flat form dredgers obstructing the water way for other ships accessing the Port of Boston. Therefore, it is best that dredging happens from the land, then using a construction deck.</li> </ul>	

Details	Action
<ul style="list-style-type: none"> <li>The current navigable channel is about 20m wide. The proposed development would involve cutting into the mud flats and land above mean high water springs back to the flood defence bank to create a hard wharf edge. Construction is likely to involve a suspended deck option.</li> <li>The wharf will be approximately 400m long.</li> </ul> <p>█ mentioned that if the wharf structure is going to cover Crown land, the Developer would need to enter an agreement with the Crown. The Crown won't sell land freehold so will need to be a lease or an Option Agreement.</p> <p>█ also mentioned that there is another Power Station project where an option agreement with a draft lease has recently been agreed.</p> <p>Following this approach would enable the Boston Project DCO team to be able to identify the terms of the option that would need to be agreed. Note that the lease would not need to be signed until after the DCO application is submitted.</p> <p>█ asked if this means a licence will be required instead of a lease. █ also asked if the project mentioned (that may not be in the public domain) was a DCO project.</p> <p>█ clarified that this was a DCO project, however it was not a licence, it was a draft lease.</p> <p>█ mentioned it would be useful to have access to any information related to this project if it is accessible in the public domain. GH mentioned that he will find out what information is available in the public domain.</p> <p><b>Action 1: █ to check whether the project is in the public domain and if so to circulate the principles of the proposed agreement to █ / █</b></p> <p>█ mentioned that the Boston Project DCO application will have to provide evidence that they have the Crown Estate's agreement.</p> <p>█ mentioned that the Crown Estate's interest cannot be Compulsory Purchased (using a CPO). If the Crown Estate is happy with the way things are going, they may provide written confirmation that they would not object to the DCO.</p> <p>█ asked who handles the Crown Estate's legal dealings. █ replied that Womble Bond Dickinson (Southampton) handles all the Crown Estate's legal dealings.</p> <p><u>Timescales</u></p> <p>█ asked how long developing an agreement would take.</p> <p>█ mentioned that there are a few unknowns and it depends how long finding common ground in negotiations take. The Crown Estate can start looking at this now if necessary. However, the overall timescale depends on how long it takes to look into and finalise the details.</p>	<p>1. █.</p>



Details	Action
<p><u>Procedure</u></p> <p>█ asked what the Boston Project team has to do to trigger this process. █ replied that the Boston Project team would need to define what is required in terms of areas of occupation. Providing plans/ detailed plans would be the first step. █ replied that the Boston Project team can define an indicative area for a wharf approximately 400m long, running along a defined area of the flood bank.</p> <p>█ asked if the request to ask the Crown to start their investigations is completed by a lawyer or the Boston Project team. █ replied that the initial approach does not need to be made by a lawyer. However, an agreement on payments and legal costs will need to be made using legal agreement.</p> <p>█ mentioned that the mechanism to the approach is likely to follow that agreed within the North Yorkshire Polyhalite Project (█ was aware that Royal HaskoningDHV are involved on this project).</p> <p>█ asked if there is a recommended approach to gaining the Crown Estate's approval. █ will send the relevant information via email.</p> <p><b>Action 2: █ to email █ / █ the information required to start the process.</b></p> <p>█ mentioned that if Royal HaskoningDHV can send the Crown Estate any maps so far, then the mapping team will be able to start discussions therefore creating a starting point for negotiations.</p> <p><b>Action 3: █ to provide the drawings for the indicative wharf layout to █ after the information to initiate the Crown's investigation is provided.</b></p> <p>█ asked how long until a draft is created. █ replied that this depends on how contentious certain aspects might get. This could be done in 5-6 months however from experience it will probably take more time.</p> <p>█ mentioned that if there are any frontage changes they would apply their methodology to re-calculate the cost implications of the changes to the land-requirement.</p> <p>█ mentioned that from a size perspective, we have to describe what the parameters might be and identify the impacts of the maximum parameters. Currently we only have an indicative layout and this is not likely to evolve further prior to submission. █ mentioned that this is likely to be acceptable to start their mapping team work; and to use as an initial basis for negotiation.</p> <p>█ mentioned that the Boston Project team will be using the investigations from the EA's Boston Barrier Environmental Statement Report. The Barrier Scheme Area partly overlaps the proposed Boston Project site.</p>	<p>2. █</p> <p>3. █</p>



<b>Details</b>	<b>Action</b>
<p>■ asked whether we would be taking samples from the mud flats. ■ identified that our initial assumptions would be to use the EA Barrier data, because there is unlikely to be a difference in the sediment characteristics.</p> <p>■ stated that if sample cores were required (e.g. vibracore sampling) there is a Crown interest and this activity will require a licence and payment of the appropriate fee.</p>	



**Minutes**

**HaskoningDHV UK Ltd.  
Industry & Buildings**

Present: (EA), (EA), (EA), (EA),  
 (RHDHV), (RHDHV) and (RHDHV)

Apologies:

From:

Date: 13 December 2018

Location: Environment Agency, Ceres House, 2 Searby Road, Lincoln, LN2 4DT

Copy:

Our reference: PB6934-RHD-01-ZZ-MI-E-1021

Classification: Open

Enclosures: Current General Arrangement drawing

**Subject: Boston Alternative Energy Facility meeting with the Environment Agency (EA)**

**Number Details**

**Action**

<b>1</b>	<p>Boston Alternative Energy Facility – outlined the project and made reference to the latest version of the general arrangement drawing, which will be provided to the EA:</p> <ul style="list-style-type: none"> <li>• Combustible RDF bales (wrapped in plastic) will be arriving by ship</li> <li>• Each ship will carry approx. 2500 tonnes of RDF</li> <li>• Proposed vessel size: 100m length</li> <li>• Vessels can only travel during high tide (there is a 3 hour navigation window; 1.5 hours either side of high tide)</li> <li>• All combustible material will be transported by ship</li> <li>• The RDF bales will be sourced from East Coast UK ports – such as Scotland, Tilbury Grimsby (i.e. none will be from overseas).</li> <li>• The Facility will not receive RDF material in loose form from vessels.</li> <li>• Damaged Bales would not be loaded onto the ships. Any bales damaged during loading would be removed prior to departure. Therefore, bales would only be damaged during rough sailing</li> <li>• The storage area behind wharf edge cannot have a stockpile of more than 450m<sup>3</sup> and there would be approximately 40-45 bale stockpiles to accommodate approx. four days' supply.</li> <li>• The RDF bales are proposed to be stored on hard standing with sealed drainage.</li> <li>• There will be 2 berths of receiving RDF and 1 berth for removal of lightweight aggregate.</li> <li>• The 2 RDF berths are the furthest up river.</li> <li>• The RDF bales will be offloaded by cranes onto trailers and taken into a dedicated bale area.</li> <li>• Bales will then be loaded onto a conveyor for transport to the feedstock processing facility.</li> <li>• The feedstock processing facility will shred RDF bales to approx. 90mm (in 2D).</li> </ul>	
----------	-----------------------------------------------------------------------------------------------------------------------------------------------------------------------------------------------------------------------------------------------------------------------------------------------------------------------------------------------------------------------------------------------------------------------------------------------------------------------------------------------------------------------------------------------------------------------------------------------------------------------------------------------------------------------------------------------------------------------------------------------------------------------------------------------------------------------------------------------------------------------------------------------------------------------------------------------------------------------------------------------------------------------------------------------------------------------------------------------------------------------------------------------------------------------------------------------------------------------------------------------------------------------------------------------------------------------------------------------------------------------------------------------------------------------------------------------------------------------------------------------------------------------------------------------------------------------------------------------------------------------------------------------------------------------------------------------------------------------------------------------------------------------------------------------------------------	--



**Number Details**

**Action**

	<ul style="list-style-type: none"> <li>• The feedstock processing facility process also involves an eddy current (for non-ferrous metals) and magnet (for ferrous metals) and inert separation (glass, sand, stones etc).</li> <li>• Ferrous and non-ferrous metals, glass, sand and stones etc will be collect separately.</li> <li>• There are scrap yards within 200m of the proposed facility which could take this metal waste.</li> <li>• Fine sands can be processed for the lightweight aggregate facility – this is can only process lightweight material; if any heavier/denser materials are separated they could be used by the Mick George Facility (for processing into secondary aggregate).</li> <li>• In terms of odour, the feedstock processing facility will be a sealed building under negative pressure therefore odour issues are mitigated.</li> <li>• Shredded material is then transferred to silos.</li> <li>• The silos feed into the gasification facility at an automated rate.</li> <li>• There are 3 identical gasification lines.</li> <li>• Gasification is different to incineration as the gasifiers will be heating solid material with hot mobile sand grinding down the RDF in a limited oxygen atmosphere, which prevents combustion of the solid material. This process generates a synthetic gas known as ‘syngas’. The syngas is transferred to a combustion chamber to generate steam.</li> <li>• Steam drives turbines (3 turbines), there is an air-cooled condenser and carbon dioxide facility on the site too.</li> <li>• A total of about 102MWe is generated by the facility.</li> <li>• 80MWe transferred to the grid and approx. 20MWe retained to power the facility.</li> <li>• Ash from the gasifiers will be used in the lightweight aggregate facility and exported by ship from the wharf at berth 3.</li> <li>• Ash residues will total about 200,000 tonnes (but this is dependent upon the content of the RDF and performance of the facility).</li> <li>• Approx. 1.2 million tonnes of RDF imported.</li> <li>• The waste processing facility will process approximately 3000 tonnes of RDF per day.</li> <li>• Each gasifier will be in operation for approximately 8,000 hours per year (approx. 333 days) with the rest for planned maintenance leaving – approx. 130 days where only 2 gasifiers are running).</li> <li>• Site is grade 1 agricultural land but has been designated for industrial use.</li> </ul>	
2	<p><u>Moving the existing tidal (wharf construction)</u></p> <p>█ asked about the construction programme for moving the existing tidal defence as the EA normally restrict works to summer months when there are fewer storms.</p>	





**Number Details**

**Action**

<p>■■■ queried if the crest height of 6.8m on the drawings so far depict the design height. GB replied that this height is based on the discussion with the landowner and is an assumed height but not fixed and open to EA input / advice.</p> <p>■■■ asked about the proposed running time for the facility. ■■■ replied 25 years, which is typical of this sort of facility. ■■■ queried if this was the design for the wharf life. GB replied that it wasn't; the wharf design needs to be longer than 25 years as the structure will be replacing existing flood defences and design should meet future climate change resilience requirements.</p> <p>■■■ mentioned the EA's design strategy which discusses all the schemes in Boston. The strategy is for 100 years which means that if the Boston Alternative Energy Facility wharf was to be in line with the rest of the Boston strategy, the crest level would need to be increased to 7m</p> <p>■■■ mentioned that the client would be open to this.</p> <p>■■■ mentioned that potentially a full crest height of 7.55m would be needed. This is the level that the Barrier is being constructed to - the freeboard height accommodates waves from the wash of ships approaching the bend on the river.</p> <p>■■■ mentioned that the wharf construction document (please see attached) sets out construction essentially as 2 piles with infills with the plan to move the defence back. ■■■ asked for an explanation of this. ■■■ replied that the proposed new quay way will be replacing the existing defence. The design for the wharf are to be provided by Royal HaskoningDHV's Maritime engineering team. Still need an indicative layout from the maritime team.</p> <p>MR asked where the flood line of defence will be if the plan is to build over the current defence.</p> <p><b>Action 2.1: ■■■ to confirm where the intended flood backstop line will be.</b></p> <p>■■■ raised concerns with the location of construction. As the site will sit over sea bank batter, if the client is not happy to take ownership of the 400m strip (where the proposed wharf will be constructed) the EA would object if the EA is expected to maintain the defence provided by the wharf. ■■■ replied that it was anticipated that the client would take responsibility however this would need to be confirmed by legal agreement with the client. The arrangement would also need to consider how the wharf construction would tie-in with existing defence features.</p>	<p><b>2.1 ■■■</b></p>
---------------------------------------------------------------------------------------------------------------------------------------------------------------------------------------------------------------------------------------------------------------------------------------------------------------------------------------------------------------------------------------------------------------------------------------------------------------------------------------------------------------------------------------------------------------------------------------------------------------------------------------------------------------------------------------------------------------------------------------------------------------------------------------------------------------------------------------------------------------------------------------------------------------------------------------------------------------------------------------------------------------------------------------------------------------------------------------------------------------------------------------------------------------------------------------------------------------------------------------------------------------------------------------------------------------------------------------------------------------------------------------------------------------------------------------------------------------------------------------------------------------------------------------------------------------------------------------------------------------------------------------------------------------------------------------------------------------------------------------------------------------------------------------------------------------------------------------------------------------------------------------------------------------------------------------------------------------------------------------------------------------------------------------------------------------------------------------------------------------------------------------------------------------------------------------------------------------------------------------------------------------------------------------------------------------------------------------------------------------------------------------------------------------------------------------------------------------------------------------------------------------------------------------------	-----------------------



**Number Details**

**Action**

	<p>████ mentioned that the EA will still be working on either side of the proposed wharf site therefore access will be required on either side at all times and after completion.</p> <p>████ asked about the construction period for the wharf as the Haven Banks project will be running between Summer 2019 to December 2020. █████ replied that if submission is achieved in Jun 2019, then construction will commence at the earliest in late 2020. This is for overall site construction and laydown area. The plan is to get the wharf constructed as early as possible, to potentially receive construction material by ship (subject to loading).</p> <p>████ queried the tender period of the DCO. █████ replied financial close for the client is after consent.</p> <p>████ mentioned that the EA has plans to maintain the banks in 2019 / 2020.</p> <p>████ asked about whether or not there will be any investigation works (site visits) before DCO submission. █████ replied that the plan is to use most the EA data from the Boston Barrier. █████ mentioned that the groundworks investigation for Haven Banks will be undertaken in January, therefore, if there is anything additional RHDHV would like the EA to do; please advise. █████ identified that he can provide RHDHV with the topographic survey for the Haven banks project; and also the GI Specification document for the Haven Banks ground investigation.</p> <p><b>Action 2.2: █████ to provide █████ with the Haven Banks topographic survey data.</b></p> <p><b>Action 2.3: █████ to provide █████ with the Haven Banks GI specification data.</b></p> <p>████ queried how far Haven Bank covers and if the EA has any topographic data for the bank. █████ replied the scheme for the Haven Banks covers 5km per bank down to Hobhole IDB , i.e. 10km in total being raised to 6.5m and is out for tender at the moment. If tenders accepted then construction of site will commence in June 2019. No programme decided as of yet, however construction has to be completed by December 2020.</p> <p>For Haven Banks there is a minimum crest height of 6.5m in line with 50 years of climate change adaptation values. █████ mentioned the crest height for the Boston Barrier was a lot higher than this at 7.55m (due to waves) to meet a 1 in 300 year event. █████ suggested that a crest height of between 7-7.55m should be acceptable. █████ to let █████ know of the proposed recommended height.</p> <p><b>Action 2.4: █████ to confirm recommended height of the wharf crest.</b></p>	<p>2.2 █████</p> <p>2.3 █████</p> <p>2.4 █████</p>
3	Boston Barrier - outlined the works	



**Number Details**

**Action**

<ul style="list-style-type: none"> <li>• Boston Barrier will be down in the recess position except for maintenance and in times of high tidal levels</li> <li>• The scheme involves widening the wet dock entrance to 18m allowing a transit of 16m beam, and new flood gate on the port.</li> <li>• The scheme will provide an extended turning circle provision for NAABSA berths for the port during the Wet Dock works (access to the Wet Dock will not be possible).</li> <li>• [REDACTED] mentioned that the EA would be implementing temporary improvement works for the 'Knuckle' which is the turning point outside the Wet Dock.</li> <li>• [REDACTED] worked with [REDACTED] Wallingford for the modelling of vessel passage and the turning circle. The simulators for the public inquiry may have removed some of the objections earlier objections from river users.</li> <li>• Dredged sediment transported to Teesside – to the Port Clarence landfill. [REDACTED] queried whether any of this material would be deposited locally, i.e. used as cover on the Boston landfill. AHu stated that this was a possibility, however, was not confirmed.</li> </ul> <p>[REDACTED] asked how susceptible the Boston Alternative Energy Facility infrastructure is to tidal water. [REDACTED] replied that in an event of overtopping, the most susceptible infrastructure would be the lightweight aggregate facility. However, they are looking to build the facility at slightly raised levels. There is the secondary defence. For the RDF storage area behind the wharf, the hardstanding would be sloped and graded [REDACTED] added there is not much hard standing (other than roads) behind the proposed facility. There is an attenuation pond within the site that was built to accommodate drainage for the whole industrial estate. This will be retained (but will be built over). The construction of the current gasification facility also built in further underground water storage (anecdotal information provided by H H Adkins who did the groundworks).</p> <p>[REDACTED] mentioned the Boston Barrier itself will be in place by late 2019. The Barrier will then go through a commissioning process and the wet dock will be constructed in 2019-2020. The project as a whole is currently projected to be complete by winter 2020.</p> <p>[REDACTED] asked whether the project had held any discussion with the Crown Estate team. [REDACTED] mentioned that a meeting had been held with the Crown Estate representatives on 16<sup>th</sup> October. They identified the need to engage in options agreement with a draft lease for their land within our boundary. Crown Estates were interested in the dredging works and the vibracore sampling – this is a licensable activity.</p> <p>[REDACTED] asked how often the Boston Barrier will be closed.</p> <p><b>Action 3.1: [REDACTED] to find out lead timings for Boston Barrier during storm surge.</b></p>	<p><b>3.1 [REDACTED]</b></p>
-------------------------------------------------------------------------------------------------------------------------------------------------------------------------------------------------------------------------------------------------------------------------------------------------------------------------------------------------------------------------------------------------------------------------------------------------------------------------------------------------------------------------------------------------------------------------------------------------------------------------------------------------------------------------------------------------------------------------------------------------------------------------------------------------------------------------------------------------------------------------------------------------------------------------------------------------------------------------------------------------------------------------------------------------------------------------------------------------------------------------------------------------------------------------------------------------------------------------------------------------------------------------------------------------------------------------------------------------------------------------------------------------------------------------------------------------------------------------------------------------------------------------------------------------------------------------------------------------------------------------------------------------------------------------------------------------------------------------------------------------------------------------------------------------------------------------------------------------------------------------------------------------------------------------------------------------------------------------------------------------------------------------------------------------------------------------------------------------------------------------------------------------------------------------------------------------------------------------------------------------------------------------------------------------------------------------------------------------------------------------------------------------------------------------------------------------------------------------------------------------------------------------------------------------------------------------------------------------------------------------------------------------------------------------------------------------------------------------------------------------------------------------------------------------------------------------------------------------------------------------------------------------------------------------------------------------------------------------------------------------------	------------------------------



**Number Details**

**Action**

	<p>████ mentioned that it would be good to know lead timings for closing the Barrier following a forecast of tidal surge. In some cases the time to take action varies – between 6 to 12 hours before the surge.</p> <p><b>Action 3.2 █████ to provide lead timings for barrier closure.</b></p> <p>████ mentioned that RHDHV would need separate flood warning plan, however, EA work can be referenced.</p> <p>████ mentioned that previous meeting with the EA identified that the EA has sediment quality data. We would be interesting in having that information.</p> <p>████ mentioned he would need to find out how to share sediment data and what licenses are required to go with this.</p> <p><b>Action 3.3: █████ to extract data sand provide to RHDHV in accordance with the required data licence</b></p>	<p><b>3.2 █████</b></p> <p><b>3.3 █████</b></p>
<p>4</p>	<p><u>Legal Permissions – Annette Hewitson outlined</u></p> <ul style="list-style-type: none"> <li>• █████ identified the aspects of the wharf that would need to be covered in legal agreement – this would be via a ‘Side Agreement’. This would not form part of the DCO, but would become active on grant of the DCO. However, it would need to be agreed (signed &amp; executed) by both parties before the end of the DCO Examination period.</li> <li>• The agreement would cover maintenance, and identify how often the EA will expect the client to inspect the wharf.</li> <li>• The agreement would cover how it is proposed to tie in the design of the wharf with the existing defences</li> <li>• The EA will also require access to existing defences – the EA would need to secure access in this legal agreement.</li> <li>• Defence standard will need to be provided in the legal agreement.</li> <li>• █████ asked if the client is based in the UK. █████ replied yes.</li> <li>• Connected with the building of the quay, there are 2 options of agreement for final design             <ol style="list-style-type: none"> <li>1. Apply permitting regime</li> <li>2. Dis-apply the environmental permitting requirements via a ‘Protective Provisions’ approach – standard set for DCO (AHe to send standards set for DCO to █████).</li> </ol> </li> </ul> <p><b>Action 4.1 █████ to provide the details of the protective provisions approach for DCO</b></p> <ul style="list-style-type: none"> <li>• Under protective provisions you will still have to go out for public consultation.</li> <li>•</li> <li>• Need to negotiate timescales</li> <li>• █████ to speak to lawyers (Eversheds Sutherland) to seek advice on the preferred use of protected provisions or EPR.</li> <li>• █████ asked when to start negotiations. █████ replied as soon as possible.</li> </ul>	<p><b>4.1 █████</b></p>



**Number Details**

**Action**

	<ul style="list-style-type: none"> <li>• [redacted] asked if EA has standard terms, does this need to be signed higher up or can this be done by a lawyer. [redacted] replied protective provision and legal agreement are all signed off by lawyers.</li> <li>• [redacted] asked if protected provisions or EPR need to be agreed before DCO submission or before consent. [redacted] replied it is best to be agreed before submission but close of examination is the last possible point for agreeing these.</li> <li>• [redacted] asked [redacted] when Boston Gasification DCO is likely to be submitted. [redacted] identified that earliest submission of April 2019, subject to PINS and consultation.</li> <li>• [redacted] mentioned that if the EA was to agree, they would need to see final designs for the wharf. GB to work with maritime design team about advancing the wharf designs.</li> </ul>	
5	<p><u>Setting up future meetings</u></p> <p>[redacted] asked about preferences for future meetings. [redacted] replied for efficiency purposes, teleconferences would be fine although with drawings/plans etc. face to face may be necessary.</p> <p>[redacted] mentioned that the PEIR will be complete in January 2019.</p>	
6	<p><u>Actions from previous meetings</u></p> <ul style="list-style-type: none"> <li>• [redacted] to send TWAO link             <ul style="list-style-type: none"> <li>○ Consultation – [redacted]</li> </ul> </li> <li>• [redacted] requested sediment data             <ul style="list-style-type: none"> <li>○ Sediment sampling results in May 2016 and more sampling in October 2018 ([redacted])</li> </ul> </li> <li>• Salt marsh survey – [redacted] mentioned this is public data and RHDHV should be receiving this soon. [redacted] earlier actions.</li> <li>• [redacted] asked about underwater noise survey – [redacted] to find out.</li> <li>• [redacted] asked about turbidity and sediment disposal – [redacted] to find out and get information to RHDHV.</li> <li>• Ecological surveys for Haven banks – [redacted] mentioned that it is unlikely the EA will be able to share this data. However, the EA does have 2016 data. [redacted] asked if RHDHV could request fish survey data and migratory fish data. [redacted] to include this in request for information.</li> <li>• Bird survey data (overwintering birds) not much more has been done. [redacted] to send through bird survey data to RHDHV.</li> <li>• [redacted] asked about the mentioning of crossing the secondary defence line. [redacted] mentioned a pinch point of the secondary line, however technical team yet to confirm conveyor over or taking bank away. [redacted] mentioned that taking the bank away may be a problem. [redacted] continued that the conveyor needs to be raised to 6m above ground at the point of entry into the feedstock processing facility. So the conveyor is likely to pass over this defence. But the conveyor cannot</li> </ul>	<p>closed</p> <p>open</p> <p>open</p> <p>open</p> <p>open</p> <p>open</p> <p>open</p>



**Number Details**

**Action**

	<p>be too high off the ground because it passes under a power line (there will be a minimal clearance height set by Western Power Distribution). The initial intention was to have conveyor lines over but provide access by flood gates –</p> <p><b>Action 6.1: [redacted] to confirm with principal contractor.</b></p> <ul style="list-style-type: none"> <li>• [redacted] mentioned the secondary bank is a public walkway. [redacted] mentioned the permanent diversion of the MacMillan Way on the main flood bank.</li> <li>• Natural England coastal footpath, contact [redacted], as NE wanted to retain the view of the coast the whole way around the UK. [redacted] mentioned that the section from Kings Lynn to Boston under consultation.</li> <li>• [redacted] to put this on the agenda for EA meeting with NE in January 2019. [redacted] to put GB down as a contact.</li> <li>• RHDHV to go through [redacted] (part of PSO) for contact with the EA</li> </ul> <p><b>Action 6.2: – [redacted] / [redacted] to circulate this to RHDHV team.</b></p>	<p><b>6.1 [redacted]</b></p> <p><b>6.2 [redacted] and [redacted]</b></p>
--	--------------------------------------------------------------------------------------------------------------------------------------------------------------------------------------------------------------------------------------------------------------------------------------------------------------------------------------------------------------------------------------------------------------------------------------------------------------------------------------------------------------------------------------------------------------------------------------------------------------------------------------------------------------------------------------------------------------------------------------------------------------------------------------------------------------------------------------------------------------------------------------------------------------------------------------------------------------------------------------------------------------------------------------------------------------------------	--------------------------------------------------------------------------



## BAEF Stakeholder Meeting

**Meeting Date:** Thursday 6<sup>th</sup> September 2018

**Attendees:** [REDACTED] (Athene Communications) [REDACTED] (RHDHV), Cllr [REDACTED] (on behalf of [REDACTED]) and [REDACTED] (LCC)

Points of Discussion	Notes
<b>Overview</b>	Following the PowerPoint presentation Gary explained about the DCO process and the forthcoming PIDS, he then introduced the project team.
<b>Questions &amp; Comments</b>	<p><u>How does it compare to Boston 1?</u> [REDACTED]</p> <p>[REDACTED] - Future aspirations for capturing carbon – looking to build on site to produce food grade carbon dioxide. 3 x 34MW facilities that will run in parallel (102MW) Current facility being built in Hull that is about the same size.</p> <p>Showed the plan of the hard edge of the wharf and the site layout. [REDACTED] then went into the process of how it will work on site. 200,000 of non-hazardous ash and 50,000 hazardous ash.</p> <p><u>Do you know where the ash will be sent to if it does have to go to landfill?</u> [REDACTED]</p> <p>[REDACTED] - Kingscliffe is the closest and the other option is Wiltshire. The other option is to explore a facility that could take it and use it – this is yet to be explored.</p> <p>[REDACTED] explained about what the anticipated road movements are – people, incoming products required and possible ash as it leaves. Showed images of Boston 1 from the opposite riverbank. Ours is going to be a little bit bigger than that in terms of the footprint.</p> <p><u>Where are the existing waste facilities in that area?</u> [REDACTED]</p> <p>[REDACTED] - [REDACTED]. We are likely to have to make the wharf a 7m for flood protection.</p> <p>[REDACTED] - Local plan was adopted in 2016 – so they knew about gasification at the time. The County Council has a waste transfer station near the site where black bin waste is taken and then transported from there.</p> <p>[REDACTED] - We would like to have the capacity to bale on site, however, this is not within our current boundary – so could be a second application. Could reduce the vehicle movements to keep it within the confines of the industrial estate – dealing with local material locally.</p> <p>[REDACTED] - To find out how much waste come to the facility</p> <p>[REDACTED] - We want to maximise the security of the supply</p>



<p><b>Questions &amp; Comments</b> (Continued)</p>	<p><u>Is there a facility like this in the UK?</u> NM</p> <p>■ - Said about Outotec – one of which is Hull – 6 plants in the UK all in commissioning stages.</p> <p>■ - Boston 1 likely to be working January 2019.</p> <p>■ - No CPO required for the site. Landowner consultation has started as well and is being run by Terraquest.</p> <p><u>Has the EA asked for any habitat replacement?</u> (It could be quite a big issue) ■</p> <p>■ - Explained about the surveys and work that is undertaken to consider this.</p> <p>■ - More concerned about the mud flats.</p> <p>■ - We're not trying to clog up the road system, our aim is to keep it as clear as possible. Tony McArdle as stepped down as CEO of LCC – this was announced in January. We don't know yet how tall our stack will be – we are still calculating this</p> <p><u>The front cover of the brochure, is that Boston 1?</u> ■</p> <p>■ - Yes - it won't really make that much difference</p> <p>■ - Boston 1 has already had a lot of complaints about the lighting. They're not sure if this is because it's in construction and this will change when it's in use, however, it is of concern.</p> <p><u>Can deliveries be made 24/7?</u> ■</p> <p>■ - Yes as long as it's permitted.</p> <p>■ – send over the scoping opinion as he's not seen it Add the Scoping Opinion to the BAEF website – ■ emailed ■ to request this</p> <p><u>Are you producing a SOCC?</u> ■</p> <p>■ explained about the informal and formal consultation. ■ explained about the timeline.</p> <p><u>Who would be the authority that is responsible for assessing the discharge?</u> ■</p> <p>■ - We have to take advice from PINS but working together is probably the most efficient way to deal with this.</p> <p>■ - Aware of West Burton Power Station – they got close to submitting and Basset.</p> <p>■ - EDF spoke to LCC in advance to get opinion.</p>
--------------------------------------------------------	-----------------------------------------------------------------------------------------------------------------------------------------------------------------------------------------------------------------------------------------------------------------------------------------------------------------------------------------------------------------------------------------------------------------------------------------------------------------------------------------------------------------------------------------------------------------------------------------------------------------------------------------------------------------------------------------------------------------------------------------------------------------------------------------------------------------------------------------------------------------------------------------------------------------------------------------------------------------------------------------------------------------------------------------------------------------------------------------------------------------------------------------------------------------------------------------------------------------------------------------------------------------------------------------------------------------------------------------------------------------------------------------------------------------------------------------------------------------------------------------------------------------------------------------------------------------------------------------------------------------------------------------------------------------------------------------------------------------------------------------------------------------------------------------------------------------------------------------------------------------------------------------------------------------------------------





<p><b>Questions &amp; Comments</b> (Continued)</p>	<p><u>Are we going to consider a PPA?</u> (traffic in the construction phase will be greater) ■■■</p> <p>■■■ - There will be relevant plans in place as part of the DCO process.</p> <p>■■■ - Interested in the sessions – how wide are your meetings? A facility like this you’d like to think that it would make some sort of contribution to the local area.</p> <p>■■■ - Absolutely</p> <p>■■■ - ■■■ - They identified a shortage of capacity at their EfW facility, how we can look at if the facility goes ahead on how it can take on some of Lincs waste.</p> <p><u>What sort of tonnage could come from Lincs?</u> ■■■</p> <p>■■■ - N&amp;P providing RDF, they have a facility in Grimsby (one of three places). Slippy Gout - waste transfer station. We cannot commit on behalf of the developer, but it has been spoken about and is one of our aims.</p> <p><u>Who is supplying the waste?</u> ■■■</p> <p>■■■ - N&amp;P.</p>
--------------------------------------------------------	--------------------------------------------------------------------------------------------------------------------------------------------------------------------------------------------------------------------------------------------------------------------------------------------------------------------------------------------------------------------------------------------------------------------------------------------------------------------------------------------------------------------------------------------------------------------------------------------------------------------------------------------------------------------------------------------------------------------------------------------------------------------------------------------------------------------------------------------------------------------------------------------------------------------------------------------



## BAEF Stakeholder Meeting

**Meeting Date:** Wednesday 5 September at 4.20pm

**Attendees:** [REDACTED] (Athene Communications), [REDACTED] (RHDHV), Cllr [REDACTED] and Cllr [REDACTED]

Points of Discussion	Notes
<b>Overview</b>	<p>Are we linked to Boston 1? – [REDACTED] explained the previous link.</p> <p>Who is BAUP? What is the driving force behind this – is there a lot of feedstock that needs a home? Will the feedstock come from the UK? Likely to be Leith, Grimsby and Tilbury. [REDACTED] explained what the feedstock is made up of – baled material. Decreasing transport as detracting transport from Slippery Gout.</p>
<b>Questions and Comments</b>	<p>With a site plan [REDACTED] explained the layout and boundary. We are working with the port to identify the appropriate times for deliveries based on tides.</p> <p>1 or 2 ships a day. What size ships? – maximum is currently 118m - ours are anticipated to be about 100m long and 12/13m wide. They will be loaded with bales and crane lifted off. Still in concept design – we want to take views to help meet the needs of the project as well as the local community. Future proofing the bank for flood defence – meeting the long-term requirements.</p> <p>[REDACTED] – level with the arrangements of the barrier.</p> <p>[REDACTED] - Bales stored in stock piles which have to be a certain size to meet fire regs (450 cubic metres) 200+ bales. It is classed as combustible material but it's not spontaneously combustible in this format. The ground water won't be contaminated with anything. This will be part of the work carried out pre-consent. How robust is the packaging for the bales – very robust – double wrapped – is combusted as part of the process. Nothing is coming from abroad, nothing from the UK. The facility needs to be constantly running – 3 lines. We are trying to keep a week's capacity on site to ensure it keeps running. We will carry out a risk capacity and accident management plan.</p> <p>[REDACTED] - Has no issue with the principle – it is an area designated for waste and recycling.</p> <p>[REDACTED] - Residents will ask why they are having everyone's rubbish dumped on them. DCO process we need to demonstrate everyone has been able to have their say on the process.</p> <p>[REDACTED] - Biggest group will be those on the other side of the river. Surprised how Boston 1 dominated the scene. This will dominate even more.</p> <p>[REDACTED] – It will be fractionally taller.</p>



<p><b>Questions &amp; Comments</b> (Continued)</p>	<p><b>Does the Metsar plant and Fogarty shield the view as well?</b></p> <p>■ - Aggregate plant will also have a chimney. We won't be able to get a permit to operate if we can't demonstrate that we meet the emissions standard. Emissions will be much less than those coming out of the hospital and crematorium. They will be very tightly controlled.</p> <p>■ - Four companies who will be very concerned: DCI, Fresh Time, Pilgrim Foods and Green Yard (formerly Penguin). They want to know what the comparison in emission is with something local or something they use.</p> <p>■■■■ is a loveable rogue and he contributes to the community.</p> <p><b>Will it pay business rates as an NSIP? – can we get an answer to this?</b></p> <p>■ - Mentioned the s106 monies – and the contribution this will make to the local community.</p> <p>■ - Walked through the process. Stock control – FEFO principle for bales. If the bales sat there for too long they would start to biodegrade. Things can be rebound. The field at the top is planned to be a construction laydown area – no plan in the immediate future to develop that area. We'll need to talk to DCI about this area. John Studholme at DCI is a tough cookie, worth going to speak to him. Shredder will be in negative pressure, so if a door is opened, air flows in or air out.</p> <p><u>Can we promise that the odour will be nil?</u> ■■</p> <p>■ - The shredder will be sealed, and any odour will be put into the air feed of the gasifier.</p> <p><u>Is the odour likely to be a bit of methane?</u> ■■</p> <p>■ - If you are inside it is likely to be unpleasant.</p> <p>■ - Dangerous objects won't get this far – e.g. unexploded shell.</p> <p><u>What is the worst-case scenario?</u> ■■</p> <p>■ - The worst-case scenario is that it stops.</p> <p><u>Is there another plant that is like this?</u> ■■</p> <p>■ - Yes – explained about Outotec – the one that is most equivalent is built in Hull (we are essentially 3 Hull's). Our MW is 102 with 80 going into the grid for export Substation connection to the pylon. Facility will be kick started by an oil starter.</p> <p><b>What pressure will there be from central gov to see this through?</b></p> <p>■ - There is a demand in EN3 policy statement – we don't have to demonstrate the need because of this.</p>
--------------------------------------------------------	------------------------------------------------------------------------------------------------------------------------------------------------------------------------------------------------------------------------------------------------------------------------------------------------------------------------------------------------------------------------------------------------------------------------------------------------------------------------------------------------------------------------------------------------------------------------------------------------------------------------------------------------------------------------------------------------------------------------------------------------------------------------------------------------------------------------------------------------------------------------------------------------------------------------------------------------------------------------------------------------------------------------------------------------------------------------------------------------------------------------------------------------------------------------------------------------------------------------------------------------------------------------------------------------------------------------------------------------------------------------------------------------------------------------------------------------------------------------------------------------------------------------------------------------------------------------------------------------------------------------------------------------------------------------------------------------------------------------------------------------------------------------------------------------------------------------------------------------------------------------------------------------------------------------------------------------------------------------------------------------------------------------------------------------------------------------------------------------------------------------------------------------------------------------------------------------------------------------------------------------------------------------------------------------------------------------------------------------------------------------------



<p><b>Questions &amp; Comments</b> (Continued)</p>	<p><u>Were any other sites considered?</u></p> <p>■ - The current site has a lack of infrastructure.</p> <p>■ - Three key issues normally for a site like this is transport, noise and air quality. Silos feed the shredded material into the gasifier at a fixed rate. This is the area where there could be a combustion problem, so there are very tight fire regs here</p> <p><u>Will the feedstock always power the unit?</u> Do you need a reserve such as oil if you can't use feedstock. It takes a day to cool down the facility.</p> <p><u>What fuel do you need?</u> Oil.</p> <p><u>Where are you getting your silt from?</u> The river.</p> <p>Port of Boston will provide the silt. We'll need a marine licence. We are trying to make sure we are doing a more positive option for the silt rather than depositing offshore</p> <p><u>What materials are going to be brought on site by road?</u> People, process chemicals e.g. slate lime and urea and ammonia - we have not yet identified the number of vehicles</p> <p><u>Where will the vehicles be coming from?</u> Sources likely to be very similar to Boston 1</p> <p>Worried about bring tanker loads from the Humber – we have to come up with a transport plan.</p> <p>■ -Vital that they are approaching as you did from Peterborough up the A16 – don't let them come up the A52 from the SW as they will get as far as Chainbridge? and they won't like the queue of traffic so will take the residential route – they must come up the A16 – insist with Highways.</p> <p>■ - We can put in recommendations in way of routing.</p> <p>■ - Working on the principle that the process involved is very highly regulated that you must keep to it – she is not concerned about that – she is going to have to fight her ward.</p> <p>■ - We have to consider each part of the site and the impact on each of the receptors.</p> <p>■ - Affordable housing (guesstimate 40 homes possibly more) being built of Wyberton road that it may have an impact on the industrial site. ■ did not want the impact of the housing to restrict the industrial estate.</p> <p>■ - We will assess the cumulative impact – this is one of the developments that we'll need to consider.</p> <p><u>Can the grid stand having that much energy fed back into it?</u> ■</p> <p>■ - We are arranging with Weston Power and the line can take it and we have consent at the moment for up to 85MW into the grid. The facility is built to operate at around 8,000 hours per year, providing power to 186,000 homes (equivalent to 60% of homes in Lincolnshire).</p> <p>■ - Possible that we'd fine a cog in the river.</p>
--------------------------------------------------------	--------------------------------------------------------------------------------------------------------------------------------------------------------------------------------------------------------------------------------------------------------------------------------------------------------------------------------------------------------------------------------------------------------------------------------------------------------------------------------------------------------------------------------------------------------------------------------------------------------------------------------------------------------------------------------------------------------------------------------------------------------------------------------------------------------------------------------------------------------------------------------------------------------------------------------------------------------------------------------------------------------------------------------------------------------------------------------------------------------------------------------------------------------------------------------------------------------------------------------------------------------------------------------------------------------------------------------------------------------------------------------------------------------------------------------------------------------------------------------------------------------------------------------------------------------------------------------------------------------------------------------------------------------------------------------------------------------------------------------------------------------------------------------------------------------------------------------------------------------------------------------------------------------------------------------------------------------------------------------------------------------------------------------------------------------------------------------------------------------------------------------------------------------------------------------------------------------------------------------------------------------------------------------------------------------------------------------------------------------------------------------------------------------------------------------------------------------------------------------------------------------------------------------------------------------------------------------------------------------------------------------------------------------------------------------------



<p><b>Questions &amp; Comments</b> (Continued)</p>	<p>■ - Book – from the Romans to B&amp;Q – A history of Wyberton – good river map dating back to the 1800s. Future proofing – carbon capture – as we are less than 300MW legally we don't have to, however, we would like to use that captured from the stack - food grade CO2 – that is likely to be tankered out by road.</p> <p>■ - That will get near the business units.</p> <p>■ - Would there be any worries of a plant like this being next to a banana ripening plant?</p> <p>■ - I don't understand the process but am thinking about it in practical terms. The fishing fleet will object.</p> <p>■ - Explained the Rochdale envelope.</p> <p><u>Impact on the river and the flow?</u> ■</p> <p>■ - The hard edge that we're going to put in is currently a soft edge. We have to model of sediment transport on the river.</p> <p>■ - The fishing fleet will object.</p> <p>■ - Port have said they won't object as we've involved them at an early stage. They are looking from a statutory perspective as well as a revenue generation perspective. <u>What is the value of the project?</u> – approx. £480 million. Increasing port employment due to the additional work. 80 vehicle movements a week.</p>
<p><b>General Comments</b></p>	<p><b>Nothing received by Royal Mail – Grace to follow up with Royal Mail.</b></p> <p>■ – We'll send them a video about the shredder post their holiday</p> <p>We checked that all questions raised by ■ had been covered.</p> <p>Rare plant locally the Horsetail.</p> <p>■ – showed an image of the final cut to the cut end of the river</p> <p><b>Send a copy of the exhibition boards – via email</b></p> <p>■ - Important to have a good common statement on emissions that people can understand e.g. like 60% of homes being lit via the facility.</p> <p>■ - Get the message across that this is not an incinerator. That's going to be 300 jobs that going to be 300 more houses required – potential comment.</p>



**General  
Comments**  
(Continued)

■ is going to be looking for sponsorship 7/9/19 for a heritage conference – hire of Black Friars theatre.



## BAEF Stakeholder Meeting

**Meeting Date:** Thursday 6<sup>th</sup> September 2018

**Attendees:** [REDACTED] (Athene Communications) [REDACTED] (RHDHV), [REDACTED] (Leader of BBC) and [REDACTED] (Economic Development Manager, BBC).

Points of Discussion	Notes
<b>Overview</b>	<p>[REDACTED] explained about the informal and formal consultation.                      Project determined by the SoS – pulling together a DCO – everything is front loaded</p>
<b>Questions</b>	<p><u>Will the shredding be done on site?</u> [REDACTED]                      [REDACTED] - Yes.</p> <p><u>Has there been any thought to use the waste heat to heat housing?</u> [REDACTED]                      [REDACTED] - Not for housing but potentially for other uses.</p> <p><u>Are the bales vermin proof?</u> [REDACTED]                      [REDACTED] - Yes – similar to agriculture bale wrap, double wrapped, currently being exported abroad, so robust. We don't anticipate a lot of ripped bales.</p> <p><u>Is the role manual?</u> [REDACTED]                      [REDACTED] - No it is all automated.</p> <p><u>What is going to be your main market for the aggregate? (UK or abroad)</u> [REDACTED]                      [REDACTED] - Potentially a lot of east coast market but we won't preclude it being exported.</p> <p><u>Is there any mileage in a railway line?</u> [REDACTED]                      [REDACTED] – we're changing the drainage capability, so we need to factor that in. Future aspiration for the construction laydown site is for an algae generation facility.</p> <p><u>What is the height of the stack at the hospital?</u> [REDACTED]                      [REDACTED] – don't know, we'll find that out – Wikipedia says 50m.                      [REDACTED] – it is a fair distance from the other side of the river for the residents that will be affected.</p> <p><u>What types of roles are there [in terms of jobs available through the construction of the site]?</u> [REDACTED]                      [REDACTED] - Construction staff, operation of facility – wharf handling side – fork lift drivers, highly skilled roles – a team will be brought in and then beneath them there will be a local level to learn and then take over. Apprentice opportunities.                      [REDACTED] - Boston College is building an engineering block.                      [REDACTED] - Keen to involve the schools.                      [REDACTED] - The idea of having a visitor centre on site                      [REDACTED] -A visitor centre would be amazing                      [REDACTED] - A viewing platform would be good. People are interested                      [REDACTED] - Show a bit coming back to the community it will go a long way, people will like that.                      [REDACTED] - Can provide details of the right people to speak to within the college.</p>



<p><b>Questions</b> (Continued)</p>	<p><u>What is the relationship with Boston 1?</u> ■                  ■ - None. We are not in competition with each other.</p>
<p><b>Comments</b></p>	<p>■ - Nearby planning has been granted for housing for 90 homes – there is potential for linking up for brownie points and good from an environmental perspective.                  ■ - It is something we can consider but is not currently part of the scheme. One thing that is missing from the list of providers is the carbon capture. This is a relatively new development. 3 units that will do the carbon capture and turn it in to food grade carbon dioxide.</p> <p>■ – One thing we want to do is diversify in the economy. This will bring a different skill set to the area and will be a positive contribution to the area.                  Bringing in a million tonnes by ship so we need to create a new wharf.                  Doubling the number of ships that currently use the river.</p> <p>■ – Will be busy and a wakeup call for them.                  ■ - We want to make sure we’re not affecting the navigable channel.</p> <p>■ - For air pollution consenting residues we have to plan for the worst-case scenario. Boston 1 stack is 40m, they had consent for 60m – we don’t know how tall ours will be we are still working on that. The CAA are only more concerned if it is more than 90m tall.</p> <p>■ - Residents are concerned about views of the stump from further afield.                  ■ - Will have less of a dominance than the power station from say Pinchbeck.                  There is no cable connection from this to Bicker                  ■ - You’re not going to Bicker to connect to the grid – potentially more energy at Bicker.                  ■ - This is not an incinerator.</p> <p>■ – September is all consultation for us. We’ll then compile our PEIR. Anticipating submission late Spring, end of Q2.</p> <p>■ – None of the plan should be a problem but the biggest problem will be construction traffic. It is notoriously bottlenecked. Access to the site is going to have to be addresses and how you achieve that I don’t know but you’re really going to have to think about it. There is no way you can get construction traffic, workers etc. through that bottleneck. It’s bad now.</p> <p>■ – The earlier we can construct the wharf the more can come in by ship.                  There are 8 shredders and they are 72 tonnes each. They normally come on a flat loader from Finland.</p> <p>■ – It is things like the aggregate and concrete getting them to the area is going to be a problem. You may need to look at bringing your own road in.</p> <p>■ - There is other infrastructure to consider e.g. B&amp;Bs.                  ■ – We have to do a socio-economic assessment.</p>





<p>■ <b>Closing Remarks</b></p>	<p>White Hart will be quiet. Skirbeck most likely quiet. Frampton – residents are very vocal in that area. Black Sluice - lucky to see someone there. Fishtoft – will be busy.</p>
---------------------------------	----------------------------------------------------------------------------------------------------------------------------------------------------------------------------------------------------



## BAEF Stakeholder Meeting

**Meeting Date:** Friday 7<sup>th</sup> September 2018

**Attendees:** [redacted] (Athene Communications) [redacted] (RHDHV), Cllr [redacted] (former BBC leader and ward councillor for Coastal)

Points of Discussion	Notes
<b>Overview of project</b>	<p>[redacted] stated that he assumes the project is like the Energy from Waste (EfW) facility at North Hykeham; [redacted] confirmed it is similar, but the technology is different.</p> <p>[redacted] explained the DCO process.</p> <p>[redacted] -Trident knoll went down the same route can see the lights of Boston 1 from his home on the other side of the river. He also mentioned that he is personal friends with [redacted] from HH Atkins.</p>
<b>Questions from [redacted]</b>	<p><b><u>Weston Power can take the 80 MW?</u></b> (185,000 homes is a fair amount of homes)</p> <p>[redacted] confirmed yes and explained that everything will come in by ship bar one small exception, aggregate exported by ship. Road transport will be minimal apart from during the build.</p> <p><b><u>Carbon dioxide – is that using a scrubber?</u></b> The emissions need to be low because of the amount of veg grown around there.</p> <p>[redacted] - no it is a different process that will create food grade CO2.</p> <p><b><u>Turning point - down where [redacted] yard is?</u></b> Turning point at the port.</p> <p>[redacted] - Yes.</p> <p>Will conditions discharge be done locally?</p> <p>[redacted] - LCC and BCC will decide who will take the lead. It is a neater solution to work with one party.</p> <p>[redacted] - I think you're on the right route. The local councillors get het up about things when their parishioners go to them.</p> <p>[redacted] - It won't have the same dominance as the Spalding plant. Visitor centre has been done successfully at the Boston Barrier. This was mentioned at the technical meeting this week. 300 jobs for construction and around 80 for operation.</p>



<p><b>Contractor Info</b></p>	<p>■■ – HH Atkins will be the main contractor.</p> <p>■■ <u>Comments:</u></p> <p>Variance in types of labour.                  Bringing some diversification to the economy.                  Looking to bring apprenticeships and working with Boston College.                  The transfer station next to Slippery Gout – both BCC and LCC have asked if this facility can take this material – ■■ – we’re receptive to this idea.                  They could install a baling plant, or we could – we have the capability to do it and it may have to be part of a separate application.                  Why are we taking Scotland’s rubbish – lack of renewable energy facilities.</p>
<p><b>Details of project explained by GB</b></p>	<p>Skirbeck and Fishtoft will have potential views but they already have views of the industrial area. Wharf bank will be 350-400m and will be cut back from the river but keeping the flood bank. It will be a hard edge.</p> <p>■■ expressed that there should be no seepage in to the river.</p> <p>We are likely to be asked to make it 7m high.                  Room for three ships.                  Shredder will remove aluminium, steel, glass or stone.                  Silos will be 30m high (100ft).                  The shredder will operate under negative pressure so if a door opens no odour will be omitted and no rubbish will fly out.                  Gasification is different to incineration. It does not burn anything it converts it into a gas which turns into steam which turns the turbine creating energy.                  The onsite pylon is the connection to the grid.                  Will look very similar to Boston 1 but will be on a bigger footprint.                  Total of seven days storage over the entire site.                  50,000 tonnes of hazardous ash will have to leave by road if the EA won’t let us turn it into aggregate.                  We don’t know the height of our stack yet.                  The stack will have to have a flashing red light on top of it for CAA regs.                  We know there is a precedent for 60m. We don’t want to higher than the stump (83m).                  We will compare it to the Frontier building.                  Likely to be submitted May/June 2019.                  Consent summer 2020 and then a period for JR.                  Have we consulted with Black Sluice – meeting with IDB on Tuesday (11<sup>th</sup> Sept).                  3-year build.                  Finished in 2024.</p>
<p><b>Closing Remarks</b></p>	<p>■■ - It sounds very positive. I hope it comes to fruition. Business rates will be very good off of it.</p>

## REPORT

### **Boston Alternative Energy Facility - Appendix 3.3**

Appendix 3.3 Letter sent at Phase One to local authority representatives and list of organisations it was sent to

Client: Alternative Use Boston Projects Ltd  
Planning Inspectorate Reference EN010095  
Document Reference 5.1  
Pursuant to Section 37(3)(c) of the Planning Act 2008  
Reference: PB6934-ATH-ZZ-XX-RP-Z-3003.3  
Status: Final/0.0  
Date: 23 March 2021





Appendix 3.3 Letter sent at Phase One to local authority representatives and list of organisations it was sent to

This appendix contains a copy of the letter sent to local authority representatives via email on 24 August 2018 and a list of the organisations it was sent to.



This page is left intentionally blank.

## Example letter sent to local authority representatives

Sent by email  
24 August 2018

Dear Ms \_\_\_\_\_,

### **Introducing the Boston Alternative Energy Facility**

The Boston Alternative Energy Facility is a state-of-the-art power-generation plant that will lead the way in land-based renewable power across the UK.

The facility will be located on the Riverside Industrial Estate, Boston, adjacent to the Haven. It will be a nationally significant infrastructure project, backed by Alternative Use Boston Projects Ltd, a privately-owned project company. The facility will generate 102MWh of renewable energy, of which 80MWh will be exported to the National Grid, with the rest used by the site.

The process by which power will be generated is called gasification. Gasification is a way of generating renewable energy and will process one million tonnes of refuse derived fuel (RDF – derived from non-recyclable household waste), providing enough power for more than 185,000 homes (equivalent to over 60% of the households in Lincolnshire). The fuel will be received by ship, not by road and will also generate lightweight aggregate product from the residues produced by the process. The aggregate will be exported from the site by ship.

We are committed to honest and open two-way engagement and are now commencing our Phase One consultation. As part of this we'd like to invite you to attend a round table briefing at Morgan House, Gilbert Drive, Boston PE21 7TQ on the 7, 10 or 11 September 2018. This is an opportunity for us to introduce the project to you in advance of the public exhibition (details below). We will also answer your questions and listen to your feedback. If these dates are not suitable, please let us know and we we'll try and arrange a suitable date and time.

If you'd like to take us up on our offer, please call 01733 207330 or email [consultation@bostonaef.co.uk](mailto:consultation@bostonaef.co.uk) to confirm your acceptance.

We are also holding a series of Public Information Days, open to all the community, giving everyone the opportunity to find out more about our proposals, offer feedback and help shape our plans. You're very welcome to come and talk to us during these events if you're unable to make the round table briefing.

Details of these events are below:

<b>Venue</b>	<b>Date</b>	<b>Time</b>
White Hart Hotel 1-5 High Street, Boston, PE21 8SH	Friday 14 September 2018	2 – 8pm
St Nicholas Community Centre Fishtoft Road, Skirbeck, PE21 0AA	Saturday 15 September 2018	2 – 8pm
Black Sluice Lock Cottages South Forty Foot Bank, London Road, Boston. PE21 7RA	Wednesday 19 September 2018	2 – 8pm
Fishtoft Pavillion Playing Fields, Church Green Road, PE21 0RP	Thursday 20 September 2018	2 – 8pm
Frampton Church Hall Middlegate Road, Frampton, Boston, PE20 1AW	Friday 21 September 2018	2 – 8pm

## Example letter sent to local authority representatives

Further information about the project can be found on our website at [www.bostonaef.co.uk](http://www.bostonaef.co.uk).

Yours sincerely

██████████

On behalf of Alternative Use Boston Projects Ltd



24.08.2018 List of organisations letter sent to

Organisation	Count
Houses of Parliament	2
Lincs County Council	13
Boston Borough Council	12
South Holland District Council	2
Lincolnshire Waste Partnership	2
Boston Town Area Committee	2
Wyberton Parish Council	1
Fishtoft Parish Council	1
Freiston	1
Holbeach Parish Council	1
Frampton Parish Council	1
Kirton Parish Council	1
Butterwick Parish Council	1
Black Sluice Internal Drainage Board	1
Witham Fourth District Internal Drainage	1
Board Greater Lincolnshire LEP	1
Lincolnshire Chamber of Commerce	1
Lincolnshire Wildlife Trust	1
South Lincolnshire RSPB	1

## REPORT

# **Boston Alternative Energy Facility - Appendix 3.4**

Appendix 3.4 Phase One media release and media coverage

Client: Alternative Use Boston Projects Ltd  
Planning Inspectorate Reference EN010095  
Document Reference 5.1  
Pursuant to Section 37(3)(c) of the Planning Act 2008  
Reference: PB6934-ATH-ZZ-XX-RP-Z-3003.4  
Status: Final/0.0  
Date: 23 March 2021





#### Appendix 3.4 Phase One media release and media coverage

This appendix contains a copy of the media release issued at Phase One and evidence of the media coverage received during this phase.



This page is left intentionally blank.



## Media Release

**04 September 2018**

### **Find out more about proposed renewable energy facility at information events**

A state-of-the-art power plant which will use refuse derived fuel is being proposed for a site at the Riverside Industrial Estate in Boston. The facility will have a net generation capacity of approximately 80MW, which is enough energy to power the equivalent of over 185,000 homes (approximately 60% of Lincolnshire households).

Boston Alternative Energy Facility will lead the way in land-based renewable power across the UK, generating energy in a secure, clean and efficient way. Alternative Use Boston Projects Ltd, the company proposing the facility, is holding a series of Public Information Days in the coming weeks where people can find out more about the plans and share their feedback.

The events will be held between 2pm and 8pm at the following venues:

- **Friday 14 September:** White Hart Hotel, 1-5 High Street, Boston PE21 8SH
- **Saturday 15 September:** St Nicholas Community Centre, Fishtoft Road, Skirbeck, PE21 0AA
- **Wednesday 19 September:** Black Sluice Lock Cottages, South Forty Foot Bank, London Road, Boston, PE21 7RA
- **Thursday 20 September:** Fishtoft Pavillion, Playing Fields, Church Green Road, PE21 0RP
- **Friday 21 September:** Frampton Church Hall, Middlegate Road, Frampton, Boston, PE20 1AW

The facility will use gasification technology to process one million tonnes of refuse derived fuel (RDF), which is derived from non-recyclable household waste. The proposed site is adjacent to the Haven, to allow the RDF to be transported to the site by ship. All of the RDF will come from the UK and it will be received in plastic wrapped bales.

The proposals include a purpose-built wharf with cranes for unloading RDF, a storage area and a processing facility to prepare the RDF to the correct specification for turning into power.

Alongside the gasification facility will be a lightweight aggregate plant to process the ash from gasification and turn it into a lightweight aggregate product that can be used in construction. This will be removed from the site by ship from the dedicated wharf.

The project will create up to 300 jobs during construction and around 80 jobs once operational. It will also make a sizeable contribution to achieving the UK's target of generating at least 15% of its power through renewable sources.

Rachel Wild, Spokesperson for the Boston Alternative Energy Facility, said:

“The new facility will set the national benchmark for power generation facilities in the UK. We see our project as a ground-breaking, innovative solution to ensuring energy security whilst reducing the amount of refuse going to landfill and we look forward to contributing to the local economy and the wider community.

## Phase One Media Release



“We welcome all feedback and the Public Information Days are a great chance for the community to find out more and comment on the proposals; helping to shape the plans for the facility.”

You can find out more about the proposals at [www.bostonaef.co.uk](http://www.bostonaef.co.uk)

**END**

### Editor's Notes

Contact: [REDACTED], Athene Communications ([REDACTED]@athene-communications.co.uk)  
[REDACTED], Athene Communications ([REDACTED]@athene-communications.co.uk)



#Do1Thing: CLIMATE CHANGE IS EVERYBODY'S ISSUE

[JOBS](#) [BOOK AN AD](#) [FOOTIES](#) [VOUCHER CODES](#) [MOTORS](#) [MARKETPLACE](#) [DIRECTORY](#) [FUNERAL NOT](#)

NEWS

# New power plant could generate enough power for 60 per cent of homes in Lincolnshire

It would create 300 construction jobs and 80 permanent positions when open

By [Lisa Porter](#)

05:00, 9 SEP 2018

▶ See news near you

In  YourArea

Enter your postcode

Go

Sign up to FREE daily email alerts from LincolnshireLive - Daily

[Privacy](#)



#Do1Thing: CLIMATE CHANGE IS EVERYBODY'S ISSUE

[JOBS](#) [BOOK AN AD](#) [FOOTIES](#) [VOUCHER CODES](#) [MOTORS](#) [MARKETPLACE](#) [DIRECTORY](#) [FUNERAL NOT](#)

A power plant planned for Boston would use rubbish to generate enough power for more than 185,000 homes.

The plan is to build the power plant on the banks of Boston's River Haven in the Riverside Industrial Estate.

Although the plans are in the early stages, if approved it would process one million tonnes of refuse-derived fuel from non-recyclable household waste.

And it would generate enough power for more than 185,000 homes, equivalent to over 60 per cent of the households in Lincolnshire.

The site would also create up to 300 jobs during the construction phase and 80 jobs when it is operational.

[READ MORE](#)

▶ [Campaigners oppose new power plant in Harworth](#)

The electricity would be generated by rubbish shipped in from the rest of the country on the [River Haven](#).



#Do1Thing: CLIMATE CHANGE IS EVERYBODY'S ISSUE

JOB S BOOK AN AD FOOTIES VOUCHER CODES MOTORS MARKETPLACE DIRECTORY FUNERAL NOT



The location planned for the power plant

It would be heated to a high temperature in a process called gasification.

## What is gasification?

It involves the creation of a chemical reaction using a restricted oxygen supply.

This converts carbon-based materials in the feedstock into a synthetic gas (syngas).

The syngas is a fuel, which is turned into electricity by recovering heat in a boiler.

The process of producing the syngas does not involve combustion, so the facility is not an incinerator. Gasification is more efficient and cleaner than mass-burn incineration, and has the additional benefit of creating a useful product – energy.

Gasification does not compete with recycling, as materials can and should be recycled where possible.

The Boston Alternative Energy Facility would be developed and funded by applicant

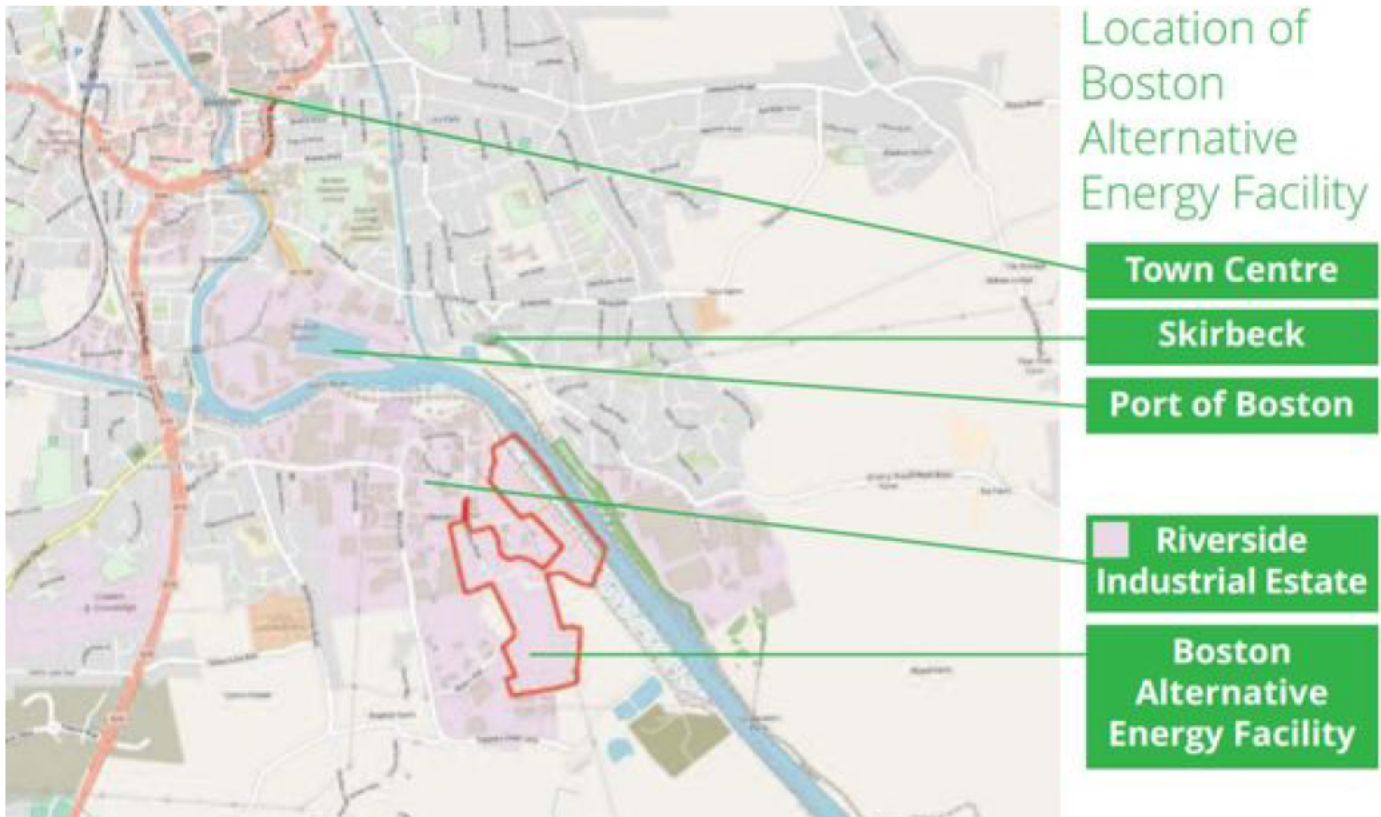
**Use Boston Projects Ltd** (AUBP), a privately-owned project company.

#Do1Thing: CLIMATE CHANGE IS EVERYBODY'S ISSUE

[JOBS](#) [BOOK AN AD](#) [FOOTIES](#) [VOUCHER CODES](#) [MOTORS](#) [MARKETPLACE](#) [DIRECTORY](#) [FUNERAL NOT](#)

tonnes the UK currently sends abroad – so the UK benefits from generating energy rather than continental Europe.

“Recovering energy from non-recyclable material is far better than it being sent to landfill.”



### The site plan

As part of the one of two phases of the development planning, the applicants will be holding a series of public consultation events.

**White Hart Hotel** - Friday, September 14 from 2pm to 8pm.

[READ MORE](#)

► Plans for 24-hour waste incinerator with 180ft chimney will 'drive businesses away', claims councillor



**#Do1Thing: CLIMATE CHANGE IS EVERYBODY'S ISSUE**

**JOB** **BOOK AN AD** **FOOTIE5** **VOUCHER CODES** **MOTORS** **MARKETPLACE** **DIRECTORY** **FUNERAL NOT**

---

Fishtoft Pavillion, Playing Fields, Thursday, September 20 – 2pm to 8pm

Frampton Church Hall, Middlegate Road, Frampton – Friday, September 21 – 2pm – 8pm

For more information, log on to [www.bostonaef.co.uk](http://www.bostonaef.co.uk)

The Boston Alternative Energy Facility is proposed for a site at the Riverside Industrial Estate. Photo: Boston Borough Council

A company behind plans for a renewable energy power plant in Boston is set to hold consultation events with local people.

The Boston Alternative Energy Facility is proposed for a site at the Riverside Industrial Estate.

It is adjacent to the Boston Biomass facility on the bank of The Haven, which is currently under construction.

It will generate 102 MW of electricity with 80 MW of this being exported to the National Grid, which is enough to power the equivalent of more than 185,000 homes.

The remainder will be used to power the facility.

It will provide investment for the region's economy and is expected to create up to 300 jobs during the construction phase and around 80 jobs when operational.

A Development Consent Order application, which has to receive central government approval, is expected to be submitted next year.

The application will include a purpose-built wharf for non-recyclable waste material to be delivered by ship rather than road and the plant will process one million tonnes of refuse-derived fuel a year from all over the UK.

For more information on the proposals click [here](#) and to find out about when and where information days will be held click [here](#).



## 7 Steps To Sharing a Car With Your Siblings - And Not Falling Out

[Read More](#)

Promotional feature from Peugeot

**A large new alternative energy power plant is being proposed for Boston – and members of the public will this week get their chance to have their say on it.**

Boston Alternative Energy Facility (BAEF) is proposing the development at a site on the Riverside Industrial Estate.

The plant would use non-recyclable household waste which will be shipped to Boston from UK [ports](#).

The plant would generate enough electricity to power the equivalent of over 185,000 homes.

### **Make £50 more selling your phone on eBay\***

\*Avg sale price of select models against select trade-in companies between 01.05 and 31.07.18 using 7 day auction format.

Sponsored by eBay



BAEF expect it to create up to 300 jobs during the construction phase and around 80 jobs when operational. The scheme will have to be approved by central government.

Information days are to be held from 2pm to 8pm at the White Hart in Boston on Friday; St Nicholas Community Centre, Fishtoft Road, Skirbeck, on Saturday; Black Sluice Lock Cottages, London Road, Boston, next Wednesday (September 19); Fishtoft Pavilion, on Thursday, September 20; and Frampton Church Hall on Friday, September 21.

# 'Outsourcing' plan for town leisure centre



Boston Guildhall



The Geoff Moulder leisure centre could be outsourced

By DANIEL JAMES  
Local News and Reporting Service  
www.bostonstandard.co.uk

Plans to make £250k in savings in leisure, culture and heritage services in Boston could see the Geoff Moulder Leisure Centre and the Town's Guildhall outsourced to other companies.

Boston Borough Council already carries out similar arrangements for the Princess Royal Sports Arena, Lifeline and the Peter Payne Performance Centre (Boston College).

Cabinet members were told last week that expressions of interest had been received from 'several not for profit organisations' and agreed to investigate the way forward.

Portfolio holder for tourism, arts, culture and heritage Councilor Claire Rylott said following the meeting that the CMLC currently costs an 'avalanche of money a year to run'.

She added that the move could see specialist services provide the same or better standards than the authority currently operates.

She said: "It wouldn't mean any reduction in services, a swimming pool is a service we do not have to provide as a borough council, but we want to continue providing it, so by outsourcing it we're looking to see if we can make savings to our budget by doing that. If we can't we'll continue to provide that service in house."

"If we look at companies that are just dealing in swimming and leisure, they may be able to provide even a better service than what we're pro-

viding and may have different ideas."

Councillors believe the move will enable the companies which take over 'to have access to greater funding than the authority' currently provides. The savings form part of the council's Transformation Programme, agreed in 2016, which is trying to plug a more than £1 million budget gap by 2020.

Councillors were told during the cabinet meeting on Wednesday, that officers have already identified approximately £50k of savings through reorganisation, leaving in the region of £200k to the tourism and leisure sector still to find.

Portfolio holder for finance Aaron Spencer said the authority would continue to invest in the facility itself, and said: "£250k was an ambitious target to meet, we have plans in place that we can meet that in the year and the programme is constantly evolving."

"When we first set this target in 2015 we didn't have the money from the Controlling Officer's Fund."

"Now we're taking another look at it to see how we can do it differently because we have more money to invest in the place so maybe we can do it as meet those targets in a different way and potentially out-do them," he added.

## REACH THOUSANDS OF LOCAL PEOPLE

AS DIGITAL MARKETING EXPERTS IN YOUR COMMUNITY, WE CAN HELP YOUR LOCAL BUSINESS STAND OUT ONLINE IN YOUR LOCAL AREA.

CALL 0207 0849 132

OR VISIT [JPLocalBusiness.co.uk](http://JPLocalBusiness.co.uk) TO FIND OUT MORE

Funeralcare

Funeral costs covered with a commitment, fit for life

Jimmy Swindle, Open70s World Natural Bodybuilding Champion 2013

CO-OP

Fully guaranteed funeral plans  
£150 from £1,830 that's just  
**£16.54**  
a month\*

Unlike others, our funeral plans include the unique Co-op Commitment<sup>1</sup> which covers the cost of your chosen funeral plan<sup>2</sup>, even if you die before you've paid in full. That's because we believe in doing right by you.

Take the weight off your mind today.  
Pop into your local Co-op Funeralcare  
Call 0800 088 4859 Buy online [coop.co.uk/press](http://coop.co.uk/press)  
& quote JP1833 for £125 off.

\* Offer valid until 31 December 2018 when JP1833 is applied. Full offer terms and conditions apply here [www.coop.co.uk/press](http://www.coop.co.uk/press)

<sup>1</sup>The Co-op Commitment applies from just two months after the plan starts.

<sup>2</sup>See standard conditions of sale for full details of the plan and commitment.

\* Cashback based on the net value of the plan at the end of the first year.



## Have say on new power plant

A large new alternative energy power plant is being proposed for Boston - and members of the public will this week get their chance to have their say on it.

Boston Alternative Energy Facility (BAEF) is proposing the development at a site on the Riverside Industrial Estate.

The plant would use non-recyclable household waste which will be shipped to Boston from UK ports.

The plant would generate enough electricity to power the equivalent of over 10,000 homes.

BAEF expect it to create up to 300 jobs during the construction phase and around 80 jobs when operational. The scheme will have to be approved by central government.

Information days are to be held from 2pm to 8pm at the Whaite Hart in Boston on Friday: St Nicholas Commu-

nity Centre, Fisholt Road, Skirbeck, on Saturday: Black Sticks Lock Cottages, London Road, Boston, next Wednesday (September 19): Fisholt Pavilion, on Thursday, September 20; and Frampton Church Hall on Friday, September 21.

More information is available at [www.bostonae.co.uk](http://www.bostonae.co.uk). You can also ask questions and give opinion by emailing [consultation@bostonae.co.uk](mailto:consultation@bostonae.co.uk) or calling 0800 0014 050.

## 12.09.2018 Lincolnshire Today Media Coverage

Public consultation events are being held by a company planning a power generating plant in Boston which will use refuse derived fuel (RDF) to generate renewable energy.

The Boston Alternative Energy Facility, proposed for a site at the Riverside Industrial Estate, will generate 102 MW of electricity, of which 80 MW will be exported to the National Grid; enough to power the equivalent of more than 185,000 homes. The remainder will be used to power the facility.

The events are a chance for the community to find out more and comment on the proposals; helping to shape the plans for the facility.

A Development Consent Order application, which has to receive central Government approval, is expected to be submitted next year. The site is adjacent to the Boston Biomass facility on the bank of The Haven, which is currently under construction.

The application will include a purpose-built wharf for non-recyclable waste material to be delivered by ship, rather than road. The plant will process one million tonnes of refuse-derived fuel a year, which will come from all over the UK.

Information days are to be held from 2pm to 8pm at the White Hart in Boston on Friday, September 14; St Nicholas Community Centre, Fishtoft Road, Skirbeck, on Saturday, September 15; Black Sluice Lock Cottages, London Road, Boston, on Wednesday, September 19; Fishtoft Pavilion, on Thursday, September 20; and Frampton Church Hall on Friday, September 21.

## Transcribed interview

Conversation Between [REDACTED] and [REDACTED]

[REDACTED] - What sounds like a huge project for Boston and indeed Lincolnshire, this is a new energy from waste recycling centre in Boston, now they're not unusual, the interesting thing about this is that it's on the site of the river bank and boats will come along with the waste from various places, will drop it off then it will go to this plant to get turned in to electricity, it sounds quite a big thing, it's at the riverside industrial estate is where it is planned for and lots of plans for it go on show in the first of a number of events starting today, let's speak to [REDACTED] who represents the Boston Alternative Energy Facility it's called on BBC Radio Lincolnshire so this is why this is literally on the river bank this big plant?

[REDACTED] - Yes good morning well I know that you are a resident, so this is obviously very close to your part

[REDACTED] - Well not far away no

[REDACTED] - The plan is it will be on the riverbank, so the first day of public consultations, is actually very important for people to understand the project and what we're proposing so there will be a selected different boards, some of the technical team on hand for people to ask questions but yes so the facility will be based there it will be creating a wharf and it's a really exciting project and we're keen to bring to Boston

[REDACTED] - In terms of where the rubbish is coming this is rubbish that people are throwing away, it comes from where on a boat and barges?

[REDACTED] - Well we're still on kind of very early days of sorting suppliers, but a suppliers that we have in mind currently has waste that has come in from potentially Scotland and the South of England, so those could be brought in, ships actually will be brought in to the haven from those locations, which ports they're coming from we're not quite clear from yet, but and they will bring in sealed bails of what will be in most people's kind of understanding terms, black bin waste, the waste that can't be recycled, and that will be brought in to Boston

[REDACTED] - Yeah and without getting complicated into the complexes of how the plant will work, effectively it comes out the other end of the plant and it's turned into electricity which goes into the national grid

[REDACTED] - Absolutely we are hoping that it will produce, it will not only be able to produce enough energy to run the facility but it will be able to power to around 185,000 homes and it uses the process of gasification and that gives steam effectively which will produce the energy which goes to the national grid, so it's a really important kind of facility to try and help the government keep it's renewable targets and also to kind of divert that waste that would otherwise go to landfill and



## 14.09.2018 BBC Radio Lincolnshire Interview

those are problems which you will probably know about with the landfill sites in the UK

██████████ - Yeah I it's interesting, I mean I think I will be able to see it from my back bedroom, because I can see the river bank I don't whether it's that close, in terms of I'm just thinking that in terms of industrial estates, it's not sort of got any neighbours but there are sort of quite a lot of houses around quite close by, I suppose the big questions will be from people, 'is it going to be noisy?', 'is it going to smell?'

██████████ – It's not going to smell and it shouldn't be noisy, all of those things are taken in to account and the assessments we will be doing in the coming months, noise will be taken into account, emissions, smell, but there should be no odour from the site, as we said the bailes coming in that will be bringing in the waste will be sealed and they will be taken in to the facility where they will be shredded and put in to the chemical process so there shouldn't be any smells but yes there will be a vision impact because obviously it is bringing in a million tons of waste, but again that's why we are having these consultation days to allow people to look at the plans to feedback and what they can do is certainly at the one today is fill in feedback forms and that will be taken in to account when we go in to the next round of the consultation for people to have their views

██████████ - And in terms of this as a project I mean how much is it costing and what sort of numbers of jobs is it likely to create?

██████████ – Well we are hopeful that it creates up to 300 jobs that's through the construction phase and actually the running of the facility, the cost well it's kind of commercially sensitive at the moment, this is an independent company that a private company that are finding the funding for it but we are talking at the multi-million pound project will be coming to Boston

██████████ - And you said once that three hundred jobs overall, including construction do you know what sort of full-time staff will be once it's up and running?

██████████ – Not at the moment it all depends on the final designs of the facility but you know when we go to our next round of consultations which we hope will be at the beginning of next year we'll probably be able to be a little bit clearer about that

██████████ - Interesting, so today is the first chance to have your say at these various events and then it's at the stage where it's not got approval yet, what happens where do you go for that and when is that likely to be looked at?

██████████ – Well if you've ever built a house you know that these things can take some time, the time table for the first round of consultations this week will then hopefully come back at the beginning of January we would hope to submit the application by kind of summer of maybe next year with the hope again of getting

## 14.09.2018 BBC Radio Lincolnshire Interview

permission, a complicated process but also to start work in twenty twenty-one in construction and for it to be up and operational by twenty twenty-four

[REDACTED] - Ah interesting we shall see what happens, it's good to speak to you [REDACTED], [REDACTED] is from the Boston Alternative Energy Facility that sounds incredible doesn't it the plan we've heard of these before but the difference here is the river feature isn't it, so they're going to have their own wharf and the boats will come possibly even from Scotland, that's one of the place they could come from, drop the waste off at the new centre, it gets turned into electricity and goes into the grid so it won't go by road it will go that way, first of those events is at the White Heart Hotel in Boston today, you can see the plans, then we've got another one tomorrow it's at St Nicholas Community Centre on Fishtoft Road, one on Wednesday at Black Sluice Cottages at the South Forty Foot Bank and on Thursday at Fishtoft Pavillion and Friday a week today at Frampton Church Hall, they could be my new neighbours sort of if that goes ahead on the river bank as I'm not far from there, I will declare an interest it's twenty-one minutes past seven, BBC Radio Lincolnshire

# REPORT

## **Boston Alternative Energy Facility - Appendix 3.5**

Appendix 3.5 Phase One maildrop flyer and list of postcodes

Client: Alternative Use Boston Projects Ltd  
Planning Inspectorate Reference EN010095  
Document Reference 5.1  
Pursuant to Section 37(3)(c) of the Planning Act 2008  
Reference: PB6934-ATH-ZZ-XX-RP-Z-3003.5  
Status: Final/0.0  
Date: 23 March 2021





### Appendix 3.5 Phase One maildrop flyer and list of postcodes

This appendix contains a copy of the flyer sent to local residents and businesses and a list of the postcodes this was delivered to.



This page is left intentionally blank.

# Boston Alternative Energy Facility

## Public Information Days

The proposed Boston Alternative Energy Facility is a **state of the art power-generation plant, generating 102MW\* of renewable energy**, of which 80MW\* will be exported to the National Grid and the rest will be used by the facility. The facility will process one million tonnes of refuse derived fuel (RDF – derived from non-recyclable household waste), generating enough power for more than 185,000 homes (equivalent to over 60% of the households in Lincolnshire).

As part of the Phase One consultation process five Public Information Days are being held to introduce the project, giving local communities the opportunity to come and find out more and share their feedback on the project.

**Details of these events are below:**

Venue	Date	Time
<b>White Hart Hotel</b> <i>1-5 High Street, Boston, PE21 8SH</i>	Friday 14 September 2018	2 – 8pm
<b>St Nicholas Community Centre</b> <i>Fishtoft Road, Skirbeck, PE21 0AA</i>	Saturday 15 September 2018	2 – 8pm
<b>Black Sluice Lock Cottages</b> <i>South Forty Foot Bank, London Road, Boston, PE21 7RA</i>	Wednesday 19 September 2018	2 – 8pm
<b>Fishtoft Pavilion</b> <i>Playing Fields, Church Green Road, PE21 0RP</i>	Thursday 20 September 2018	2 – 8pm
<b>Frampton Church Hall</b> <i>Middlegate Road, Frampton, Boston, PE20 1AW</i>	Friday 21 September 2018	2 – 8pm

If you would like further information about Boston Alternative Energy Facility, please visit:

[www.bostonaef.co.uk](http://www.bostonaef.co.uk)

Contact us via email: [consultation@bostonaef.co.uk](mailto:consultation@bostonaef.co.uk)

Phone: **0800 0014 050**

Or mail using our freepost address:

Boston Alternative Energy Facility

RTLY-RLGH-GKSE

FREEPOST

25 Priestgate, Peterborough, PE1 1JL

\* MW hour equivalent



**List of postcodes Phase One maildrop was sent to**

<b>Area</b>	<b>District</b>	<b>Sector</b>	<b>Drop Date</b>	<b>Count</b>
PE	21	9	27/08/2018	3668
PE	21	0	27/08/2018	4265
PE	20	1	27/08/2018	3141
PE	21	6	27/08/2018	2605
PE	21	7	27/08/2018	4209
PE	21	8	27/08/2018	5952
PE	22	0	27/08/2018	2665
				Total 26505

## REPORT

### **Boston Alternative Energy Facility - Appendix 3.6**

Appendix 3.6 Poster advertising Phase One Public Information Days and list of venues where this was displayed

Client: Alternative Use Boston Projects Ltd  
Planning Inspectorate Reference: EN010095  
Document Reference: 5.1  
Pursuant to: Section 37(3)(c) of the Planning Act 2008  
Reference: PB6934-ATH-ZZ-XX-RP-Z-3003.6  
Status: Final/0.0  
Date: 23 March 2021







Appendix 3.6 Poster advertising Phase One Public Information Days and list of venues where this was displayed

This appendix contains a copy of the poster advertising the Phase One consultation events and a list of the places where this was displayed.



This page is left intentionally blank.

# Boston Alternative Energy Facility

## Public Information Days

The proposed Boston Alternative Energy Facility is a **state of the art power-generation plant, generating 102MW\* of renewable energy**, of which 80MW\* will be exported to the National Grid and the rest will be used by the facility. The facility will process one million tonnes of refuse derived fuel (RDF – derived from non-recyclable household waste), generating enough power for more than 185,000 homes (equivalent to over 60% of the households in Lincolnshire).

As part of the Phase One consultation process five Public Information Days are being held to introduce the project, giving local communities the opportunity to come and find out more and share their feedback on the project.

**Details of these events are below:**

Venue	Date	Time
<b>White Hart Hotel</b> <i>1-5 High Street, Boston, PE21 8SH</i>	Friday 14 September 2018	2 – 8pm
<b>St Nicholas Community Centre</b> <i>Fishtoft Road, Skirbeck, PE21 0AA</i>	Saturday 15 September 2018	2 – 8pm
<b>Black Sluice Lock Cottages</b> <i>South Forty Foot Bank, London Road, Boston, PE21 7RA</i>	Wednesday 19 September 2018	2 – 8pm
<b>Fishtoft Pavilion</b> <i>Playing Fields, Church Green Road, PE21 0RP</i>	Thursday 20 September 2018	2 – 8pm
<b>Frampton Church Hall</b> <i>Middlegate Road, Frampton, Boston, PE20 1AW</i>	Friday 21 September 2018	2 – 8pm

If you would like further information about Boston Alternative Energy Facility, please visit:

[www.bostonaef.co.uk](http://www.bostonaef.co.uk)

Contact us via email: [consultation@bostonaef.co.uk](mailto:consultation@bostonaef.co.uk)

Phone: **0800 0014 050**

Or mail using our freepost address:

Boston Alternative Energy Facility

RTLY-RLGH-GKSE

FREEPOST

25 Priestgate, Peterborough, PE1 1JL

\* MW hour equivalent



## List of locations the Phase One poster was displayed

- One Stop
- Acorn Taxi
- Len Matlock Voluntary Centre
- Boston Health Clinic
- Scooby Doo Discount Stores
- Bargain Buy
- Viking Store Post Office
- Tatry Stores
- Euro Plus
- Deli Alta
- New Taste Café
- The Magpies Nest Antiques
- Café Nero
- Cooplands
- Costa
- Wilkinsons
- Greggs
- Poundland
- Old Leake Community Centre
- Cost cutter Wrangle, Post Office
- The Bricklayers Arms, Old Leake
- Coop Old Leake
- Traveller's rest café Leverton
- Tesco Superstore
- Swineshead Village store
- Swineshead Shurch Hall
- Swineshead Coop
- Jhay Stores, Kirton
- Coop Kirton
- Coop Wyberton
- Frampton Shurch
- Frampton Village Hall
- Kirton Library
- White Hart Hotel
- Pescod Square community Notice Board
- Town Centre Bus Stop
- European Food
- Parkside medical centre
- Boston College
- Boston University
- Boston Sixth
- Coop Skirbeck
- St Nicholas Community Centre, Skirbeck
- Fishtoft Pavillion
- Freiston Butcher
- Freiston Post Office
- Freiston Bull and Dog Pub
- Danny Flear Community Centre
- TH Clements, Bennington

## REPORT

# **Boston Alternative Energy Facility - Appendix 3.7**

Appendix 3.7 Phase One translated poster and locations  
it was sent to

Client: Alternative Use Boston Projects Ltd  
Planning Inspectorate Reference EN010095  
Document Reference 5.1  
Pursuant to Section 37(3)(c) of the Planning Act 2008  
Reference: PB6934-ATH-ZZ-XX-RP-Z-3003.7  
Status: Final/0.0  
Date: 23 March 2021





### Appendix 3.7 Phase One translated poster and locations it was sent to

This appendix contains copies of the Phase One poster translated into Latvian, Lithuanian and Polish and a list of the locations these were sent to.



This page is left intentionally blank.

# Bostonas Alternatīvās Energijas Uzņēmums

## Sabiedrības Informēšanas Dienas

Iniciētais Bostonas Alternatīvās Energijas Uzņēmums ir jaunākā elektroenerģijas ražošanas rūpnīca, **saražojot 102MW\* atjaunojamās enerģijas**, no kuras 80MW\* tiks eksportēti uz Valsts Tikliem un pārējo izmantotos uzņēmums pats.

Uzņēmums pārstrādās 1 miljonu tonnu no atkritumiem ražotu degvielu (ARD – no nepārstrādājamiem sadzīves Atkritumiem Ražota Degviela), saražojot jaudu, kuras pietiek 185,000 mājsaimniecībām (līdzvērtīga vairāk, kā 60% mājsaimniecību vajadzībām Linkolnšīrā).

Pirmās Fāzes ietvaros notiks piecas Sabiedrības Informēšanas Dienas iepazīstinot ar projektu, dodot vietējai sabiedrībai iespēju atnākt, uzzināt vairāk un dalīties ar savām pārdomām par projektu.

### Informācijas par tikšanās reizēm zemāk:

Vieta	Datums	Laiks
<b>White Hart Hotel</b> <i>1-5 High Street, Bostonā, PE21 8SH</i>	Piektdien 14 Septembris 2018	14:00 – 20:00
<b>St Nicholas Community Centre</b> <i>Fishtoft Road, Skirbeck, PE21 0AA</i>	Sestdien 15 Septembris 2018	14:00 – 20:00
<b>Black Sluice Lock Cottages</b> <i>South Forty Foot Bank, London Road, Bostonā, PE21 7RA</i>	Trešdien 19 Septembris 2018	14:00 – 20:00
<b>Fishtoft Pavilion</b> <i>Playing Fields, Church Green Road, PE21 0RP</i>	Ceturtdien 20 Septembris 2018	14:00 – 20:00
<b>Frampton Church Hall</b> <i>Middlegate Road, Frampton, Bostonā, PE20 1AW</i>	Piektdien 21 Septembris 2018	14:00 – 20:00

Ja jūs vēlaties uzzināt vairāk par Bostonas Alternatīvās Energijas uzņēmumu, lūdzu apmeklējiet:

[www.bostonaef.co.uk](http://www.bostonaef.co.uk)

Sazinieties ar mums pa e-pastu: [consultation@bostonaef.co.uk](mailto:consultation@bostonaef.co.uk)

Telefonu: **0800 0014 050**

Vai sūtiet vēstules pa brīvu uz:

Boston Alternative Energy Facility

RTLY-RLGH-GKSE

FREEPOST

25 Priestgate, Peterborough, PE1 1JL

\* MW stundas ekvivalents





# Bostono alternatyvios energijos jėgainė

## Visuomenės informavimo dienos

Siūloma Bostono alternatyvios energijos jėgainė – **tai naujausia elektros energijos gamybos jėgainė, gaminanti 102MW\* atsinaujinančios energijos**, iš kurios 80MW\* bus tiekiami į nacionalinį tinklą, o likusi - naudojama objekte. Įmonė perdirbs vieną milijoną tonų kuro, pagaminto iš atliekų (angl. RDF) (RDF – gaunama iš perdirbimui netinkamų buitinių atliekų), pagaminant pakankamai elektros daugiau nei 185000 namų (tai virš 60% namų ūkių, esančių Linkolnšyre).

Pirmojo konsultacinio proceso metu buvo surengtos penkios visuomenės informavimo dienos, kad šis projektas būtų pristatytas ir vietinei bendruomenei suteikta galimybė dalyvauti ir sužinoti daugiau, bei išreikšti savo nuomonę apie šį projektą.

### Duomenys apie šiuos renginius pateikti žemiau:

Vieta	Data	Laikas
<b>Viešbutis "White Hart Hotel"</b> <i>1-5 High Street, Boston, PE21 8SH</i>	Penktadienis 2018 m. rugsėjo 14	14:00 – 20:00
<b>St Nicholas Community Centre (Bendruomenės centras)</b> <i>Fishtoft Road, Skirbeck, PE21 0AA</i>	Šeštadienis 2018 m. rugsėjo 15	14:00 – 20:00
<b>Black Sluice Lock Cottages</b> <i>South Forty Foot Bank, London Road, Boston, PE21 7RA</i>	Trečiadienis 2018 m. rugsėjo 19	14:00 – 20:00
<b>Fishtoft Pavilion</b> <i>Playing Fields, Church Green Road, PE21 0RP</i>	Ketvirtadienis 2018 m. rugsėjo 20	14:00 – 20:00
<b>Frampton Church Hall</b> <i>Middlegate Road, Frampton, Boston, PE20 1AW</i>	Penktadienis 2018 m. rugsėjo 21	14:00 – 20:00

Jei norėtume gauti daugiau informacijos apie Bostono alternatyvios energijos jėgainę prašome apsilankyti mūsų tinklapyje:

[www.bostonaef.co.uk](http://www.bostonaef.co.uk)

Susisiekite su mumis el. paštu: [consultation@bostonaef.co.uk](mailto:consultation@bostonaef.co.uk)

Tel.: **0800 0014 050**

arba parašykite mums laišką, mūsų nemokamu adresu:

Boston Alternative Energy Facility

RTLY-RLGH-GKSE

FREEPOST

25 Priestgate, Peterborough, PE1 1JL

\* MW val. ekvivalentas



# Alternatywna Energia dla Bostonu

## Dni informacji publicznej

Proponowana alternatywna elektrownia dla Bostonu to **nowoczesny zakład wytwarzający 102MW\* energii odnawialnej**, z czego 80MW\* będzie przesyłane do sieci państwowej, a reszta zostanie zużyta przez obiekt. Zakład przetworzy milion ton paliwa uzyskanego z odpadów (RDF – z odpadów domowych, które nie nadają się do recyklingu), wytwarzając prąd dla ponad 185 tysięcy domów (ponad 60% gospodarstw domowych w Lincolnshire).

W ramach Fazy Pierwszej procesu konsultacyjnego zorganizowano pięć dni informacji publicznej, aby zaprezentować ten projekt, dając lokalnym społecznościom okazję, aby przyjść i podzielić się swymi opiniami na temat projektu.

**Szczegóły podano poniżej:**

Miejsce	Data	Godzina
<b>White Hart Hotel</b> <i>1-5 High Street, Boston, PE21 8SH</i>	Piątek 14 września 2018	14 – 20
<b>St Nicholas Community Centre</b> <i>Fishtoft Road, Skirbeck, PE21 0AA</i>	Sobota 15 września 2018	14 – 20
<b>Black Sluice Lock Cottages</b> <i>South Forty Foot Bank, London Road, Boston, PE21 7RA</i>	Środa 19 września 2018	14 – 20
<b>Fishtoft Pavilion</b> <i>Playing Fields, Church Green Road, PE21 0RP</i>	Czwartek 20 września 2018	14 – 20
<b>Frampton Church Hall</b> <i>Middlegate Road, Frampton, Boston, PE20 1AW</i>	Piątek 21 września 2018	14 – 20

Jeśli chcesz uzyskać dodatkowe informacje na temat alternatywnej elektrowni dla Bostonu, wejdź na:

[www.bostonaef.co.uk](http://www.bostonaef.co.uk)

Skontaktuj się z nami - email: [consultation@bostonaef.co.uk](mailto:consultation@bostonaef.co.uk)

Tel: **0800 0014 050**

Lub listownie na bezpłatny adres:

Boston Alternative Energy Facility

RTLY-RLGH-GKSE

FREEPOST

25 Priestgate, Peterborough, PE1 1JL

\* Równoważnik MW godz



List of where the translated posters were sent to

Business	Address 1	Address 2	Address 3
Freshtime UK Ltd	The Found, Riverside Industrial Estate	Marsh Lane	Boston PE21 7PJ
Coveris	Tenens Way, Riverside Industrial Estate		Boston PE21 7SZ
Lincs Waste Management LTD	The Saxon, Marsh Lane	Riverside Industrial Estate	Boston PE21 7PA
Porcher Abrasive Coatings LTD	Riverside Industrial Estate	Nursery Road	Boston PE21 7TN
Anglia Bearing Company LTD	17 Lealand Way	Marsh Lane	Boston PE21 7SW
Dynamic Casette International LTD	Marsh Lane	Boston PE21 7TX	
Clarke Group Construction LTD	The Workshop, Slippery Gowt Lane	Wyberton	Boston PE21 7AA
Parkinsons	The Found Riverside, Industrial Estate	Marsh Lane	Boston PE21 7FP
Euroflow Engineering	The Found, Riverside Industrial Estate	Marsh Lane	Boston PE21 7PJ
Boston Motorcool	3 Industrial Estate	Broadfield Lane	Boston PE21 8DR
Howdens Joinery	Units E8, E10, & E11 Norfolk Street Industrial Estate	Norfolk Street	Boston PE21 9HG
Wakefield Autos	Plover Close	Boston PE21 7RQ	
Kalas Packaging	Unit 8 Haven Business Park	Slippery Gowt Lane, Wyberton	Boston PE21 7AA
Rolec Services LTD	Ralphs Lane	Boston PE20 1QU	
Ripe Now	Skeldyke Road, Kirton	Boston PE20 1LR	
Adan Ltd	Nursery Road	Riverside Industrial Estate	Boston PE21 7TN

## REPORT

# Boston Alternative Energy Facility - Appendix 3.8

Appendix 3.8 List of parish councils Phase One posters  
sent to

Client: Alternative Use Boston Projects Ltd  
Planning Inspectorate Reference EN010095  
Document Reference 5.1  
Pursuant to Section 37(3)(c) of the Planning Act 2008  
Reference: PB6934-ATH-ZZ-XX-RP-Z-3003.8  
Status: Final/0.0  
Date: 23 March 2021





### Appendix 3.8 List of parish councils Phase One posters sent to

This appendix contains a list of the parish councils the Phase One posters were sent to for display.



This page is left intentionally blank.

List of Parish Councils Phase One posters were sent to

<b>Organisation</b>	<b>Role</b>	<b>Address 1</b>	<b>Address 2</b>	<b>City</b>	<b>Postcode</b>
Wyberton Parish Council and Frampton Parish Council	Clerk			Boston	PE21 7BX
Wyberton Parish Council	Clerk			Boston	PE20 2DE
Fishtoft Parish Council	Clerk			Boston	PE21 0BS
Freiston Parish Council and Butterwick Parish Council	Clerk			Boston	PE22 0HG
Holbeach Parish Council	Clerk			Holbeach	PE12 7LW
Kirton Parish Council	Clerk			Boston	PE20 2PS
Algakirk Parish Council	Clerk			Boston	PE21 0BS
Amber Hill Parish Council	Clerk			Boston	PE20 3NP
Benington Parish Council	Clerk			Boston	PE22 0HG
Bicker Parish Council	Clerk			Spalding	PE11 4XX
Fosdyke Parish Council	Clerk			Fosdyke Bridge, Boston	PE20 2DE
Holland Fen with Brothertoft Parish Council	Clerk			Coningsby	LN4 4SZ
Leverton Parish Council	Clerk			Benington, Boston	PE22 0DN
Old Leake Parish Council	Clerk			Gipsey Bridge, Boston	PE22 7DA
Sutterton Parish Council	Clerk			Boston	PE20 2DE
Swineshead Parish Council	Clerk			North End, Swineshead, Boston	PE20 3LZ
Wigtoft Parish Council	Clerk			Swineshead, Boston	PE20 3JJ
Wrangle Parish Council	Clerk			Boston	PE22 9DL

## REPORT

# **Boston Alternative Energy Facility - Appendix 3.9**

Appendix 3.9 Newspaper notices advertising Phase One  
Public Information Day locations and dates

Client: Alternative Use Boston Projects Ltd  
Planning Inspectorate Reference: EN010095  
Document Reference: 5.1  
Pursuant to: Section 37(3)(c) of the Planning Act 2008  
Reference: PB6934-ATH-ZZ-XX-RP-Z-3003.9  
Status: Final/0.0  
Date: 23 March 2021







### Appendix 3.9 Newspaper notices advertising Phase One Public Information Day locations and dates

This appendix contains evidence of the newspaper notices that were placed to advertise the Phase One Public Information Days.



This page is left intentionally blank.

# Classified

## PUBLIC NOTICES

### PUBLIC NOTICES

## Boston Alternative Energy Facility Public Information Days

The proposed Boston Alternative Energy Facility is a **state of the art power-generation plant, generating 102MW\* of renewable energy**, of which 80MW\* will be exported to the National Grid and the rest will be used by the facility. The facility will process one million tonnes of refuse derived fuel (RDF - derived from non-recyclable household waste), generating enough power for more than 185,000 homes (equivalent to over 60% of the households in Lincolnshire).

As part of the Phase One consultation process five Public Information Days are being held to introduce the project, giving local communities the opportunity to come and find out more and share their feedback on the project.

Details of these events are below:

Venue	Date	Time
<b>White Hart Hotel</b> 1-5 High Street, Boston, PE21 8SH	Friday 14 September 2018	2 - 8pm
<b>St Nicholas Community Centre</b> Fishtoft Road, Skirbeck, PE21 0AA	Saturday 15 September 2018	2 - 8pm
<b>Black Sluice Lock Cottages</b> South Forty Foot Bank, London Road, Boston, PE21 7RA	Wednesday 19 September 2018	2 - 8pm
<b>Fishtoft Pavilion</b> Playing Fields, Church Green Road, PE21 0RP	Thursday 20 September 2018	2 - 8pm
<b>Frampton Church Hall</b> Middlegate Road, Frampton, Boston, PE20 1AW	Friday 21 September 2018	2 - 8pm

If you would like further information about Boston Alternative Energy Facility, please visit:

[www.bostonaef.co.uk](http://www.bostonaef.co.uk)

Contact us via email: [consultation@bostonaef.co.uk](mailto:consultation@bostonaef.co.uk)

Phone: 0800 0014 050

Or mail using our freepost address:  
Boston Alternative Energy Facility  
RTLY-RLGH-GKSE

FREEPOST

25 Priestgate, Peterborough, PE1 1JL

\* MW hour equivalent



### LINCOLNSHIRE COUNTY COUNCIL ROAD TRAFFIC REGULATION ACT 1984 TEMPORARY RESTRICTION TO TRAFFIC (WHAPLODE ST CATHERINE - MILL GATE & RAVENS BANK)

NOTICE IS HEREBY GIVEN that LINCOLNSHIRE COUNTY COUNCIL intends to make an Order on Mill Gate & Ravens Bank to allow for essential maintenance works to be carried out.

The effect of the Order will be to close the roads to traffic as listed in the Schedule.

Access will be maintained to properties on the affected length of road but may be subject to delays.

The works are expected to commence on or about 10 September 2018 and continue for approximately 1 day.

The Order will come into operation on 10 September 2018 and will continue in force for a period of 18 months or the completion of the works whichever is the sooner.

#### SCHEDULE

Mill Gate  
(Ravens Bank to a point 650 metres south)  
Ravens Bank (Millgate to Gelders Lane)

The restriction shall only apply during such times and to such extent as shall from time to time be indicated by traffic signs prescribed by the Traffic Signs Regulations and General Directions 2002.

R A WILLS, EXECUTIVE DIRECTOR  
(ENVIRONMENT & ECONOMY)

### LINCOLNSHIRE COUNTY COUNCIL ROAD TRAFFIC REGULATION ACT 1984 TEMPORARY RESTRICTION TO TRAFFIC (LONG SUTTON - VICARAGE LANE)

NOTICE IS HEREBY GIVEN that LINCOLNSHIRE COUNTY COUNCIL intends to make an Order on Vicarage Lane to allow for essential maintenance works to be carried out.

The effect of the Order will be to close the road to traffic between A1101 to Roman Bank Crosses junction.

Access will be maintained to properties on the affected length of road but may be subject to delays.

The works are expected to take place during a four week period commencing on or about 19 September 2018 and lasting for approximately 3 days.

The Order will come into operation on 19 September 2018 and will continue in force for a period of 18 months or the completion of the works whichever is the sooner.

The restriction shall only apply during such times and to such extent as shall from time to time be indicated by traffic signs prescribed by the Traffic Signs Regulations and General Directions 2002.

R A WILLS, EXECUTIVE DIRECTOR  
(ENVIRONMENT & ECONOMY)

### PUBLIC NOTICE OF PROPOSED DISPOSITION

The Royal British Legion  
Registered charity no. 219279

Section 121 of the Charities Act 2011  
Notice of proposed disposition of charity land

The Former Royal British Legion Club 3, Malting Lane, Donington, Spalding, Lincolnshire, PE11 4XA.

The Royal British Legion gives notice that it proposes to dispose of The Former Royal British Legion Club 3, Malting Lane, Donington, Spalding, Lincolnshire, PE11 4XA held by it as trustee. It is proposed that the disposal will be by way of a sale of the freehold and that the property will be conveyed by way of private treaty or such other method which is deemed appropriate.

The Royal British Legion invites representations concerning the proposed disposal. Representations about this proposal should be sent in writing to: Samantha Edmunds Regional Team Leader & Property Manager Midlands, Commercial Department, The Royal British Legion, Haig House, 199 Borough High Street, London. SE1 1AA. The Royal British Legion will consider representations received within one month of the date of this Notice.

Date: 28 August 2018

### LINCOLNSHIRE COUNTY COUNCIL ROAD TRAFFIC REGULATION ACT 1984 TEMPORARY RESTRICTION TO TRAFFIC (MOULTON SEAS END - PIPWELL GATE)

NOTICE IS HEREBY GIVEN that LINCOLNSHIRE COUNTY COUNCIL has made an Order on Pipwell Gate to allow for essential maintenance works to be carried out.

The effect of the Order will be to close the road to traffic.

Access will be maintained to properties on the affected length of road but may be subject to delays.

The works are expected to commence on or about 4 September 2018 and continue for approximately 2 days.

The Order will come into operation on 4 September 2018 and will continue in force for a period of 18 months or the completion of the works whichever is the sooner.

The restriction shall only apply during such times and to such extent as shall from time to time be indicated by traffic signs prescribed by the Traffic Signs Regulations and General Directions 2002.

R A WILLS, EXECUTIVE DIRECTOR  
(ENVIRONMENT & ECONOMY)  
LINCOLNSHIRE COUNTY COUNCIL  
ROAD TRAFFIC REGULATION ACT 1984  
TEMPORARY RESTRICTION TO TRAFFIC  
(HOLBEACH - A17 & A151)

NOTICE IS HEREBY GIVEN that LINCOLNSHIRE COUNTY COUNCIL intends to make an Order on A17 & A151 to allow for essential maintenance works to be carried out.

The effect of the Order will be to impose a temporary 30mph speed limit restriction in place as listed in the Schedule.

Access will be maintained to properties on the affected length of road but may be subject to delays.

The works are expected to commence on or about 20 August 2018 and continue for approximately 2 weeks.

The Order will come into operation on 20 August 2018 and will continue in force for a period of 18 months or the completion of the works whichever is the sooner.

The restriction shall only apply during such times and to such extent as shall from time to time be indicated by traffic signs prescribed by the Traffic Signs Regulations and General Directions 2002.

#### SCHEDULE

A17 (Mill Lane to Penny Hill Road)  
A151 (A17 to B1515)

R A WILLS, EXECUTIVE DIRECTOR  
(ENVIRONMENT & ECONOMY)

**Life is local**  
 CONTACT US NOW FOR YOUR advertising needs 01780 484833

ILIFFE MEDIA

### PUBLIC NOTICE OF PROPOSED DISPOSITION

The Royal British Legion  
Registered charity no. 219279

Section 121 of the Charities Act 2011  
Notice of proposed disposition of charity land

The Former Royal British Legion Club Gashouse Lane, Sutton Bridge, Spalding, Lincolnshire, PE12 9SP

The Royal British Legion gives notice that it proposes to dispose of The Former Royal British Legion Club Gashouse Lane, Sutton Bridge, Spalding, Lincolnshire, PE12 9SP held by it as trustee. It is proposed that the disposal will be by way of a sale of the freehold and that the property will be conveyed by way of private treaty or such other method which is deemed appropriate.

The Royal British Legion invites representations concerning the proposed disposal. Representations about this proposal should be sent in writing to: Samantha Edmunds Regional Team Leader & Property Manager Midlands, Commercial Department, The Royal British Legion, Haig House, 199 Borough High Street, London. SE1 1AA. The Royal British Legion will consider representations received within one month of the date of this Notice.

Date: 28 August 2018

### LINCOLNSHIRE COUNTY COUNCIL ROAD TRAFFIC REGULATION ACT 1984 TEMPORARY RESTRICTION TO TRAFFIC (HOLBEACH - FURTHER OLD GATE)

NOTICE IS HEREBY GIVEN that LINCOLNSHIRE COUNTY COUNCIL intends to make an Order on Further Old Gate to allow for essential maintenance works to be carried out.

The effect of the Order will be to close the road to traffic between B1168 & Cranesgate North.

Access will be maintained to properties on the affected length of road but may be subject to delays.

The works are expected to take place during a four week period commencing on or about 19 September 2018 and lasting for approximately 4 days.

The Order will come into operation on 19 September 2018 and will continue in force for a period of 18 months or the completion of the works whichever is the sooner.

The restriction shall only apply during such times and to such extent as shall from time to time be indicated by traffic signs prescribed by the Traffic Signs Regulations and General Directions 2002.

R A WILLS, EXECUTIVE DIRECTOR  
(ENVIRONMENT & ECONOMY)

### PROPERTY

#### HOUSES TO LET

**1 Bedroom Bungalow**  
(Near Spalding town centre). Newly refurbished. Quiet location. Parking. To suit 1 person. £115pw incl. bills 07950 869749

To Advertise Please call 01780 484833

ILIFFE MEDIA



Looking to advertise your Business

Call Today 01780 484833

ILIFFE MEDIA

**Life is local**  
CONTACT US NOW FOR YOUR advertising needs 01780 484833 ILIFFE MEDIA

Classified

NOTICES

**Boston Alternative Energy Facility  
Public Information Days**

Proposed Boston Alternative Energy Facility is a **state of the art power-generation plant, generating 102MW\* of renewable energy**, of which 80MW\* exported to the National Grid and the rest will be used by the facility. The plant will process one million tonnes of refuse derived fuel (RDF - derived from recyclable household waste), generating enough power for more than 185,000 (equivalent to over 60% of the households in Lincolnshire).

As part of the Phase One consultation process five Public Information Days are being held to introduce the project, giving local communities the opportunity to attend and find out more and share their feedback on the project.

Details of these events are below:

Event	Date	Time
<b>St. Hart Hotel</b> High Street, Boston, PE21 8SH	Friday 14 September 2018	2 - 8pm
<b>St. Nicholas Community Centre</b> St. Nicholas Road, Skirbeck, PE21 0AA	Saturday 15 September 2018	2 - 8pm
<b>St. Andrew Sluice Lock Cottages</b> Forty Foot Bank, London Road, Boston, PE21 7RA	Wednesday 19 September 2018	2 - 8pm
<b>St. Andrew Soft Pavilion</b> St. Andrew's Fields, Church Green Road, PE21 0RP	Thursday 20 September 2018	2 - 8pm
<b>St. Andrew Church Hall</b> St. Andrew's Gate Road, Frampton, Boston, PE20 1AW	Friday 21 September 2018	2 - 8pm

If you would like further information about Boston Alternative Energy Facility, please visit:

[bostonaef.co.uk](http://bostonaef.co.uk)  
Contact us via email: [consultation@bostonaef.co.uk](mailto:consultation@bostonaef.co.uk)  
Tel: 0800 0014 050

Mail using our freepost address:  
Boston Alternative Energy Facility  
RLGH-GKSE  
POST  
St. Andrew's Gate, Peterborough, PE1 1JL  
1 hour equivalent



**LINCOLNSHIRE COUNTY COUNCIL  
TRAFFIC REGULATION ACT 1984  
TEMPORARY RESTRICTION TO TRAFFIC  
(HOLBEACH - A17 & A151)**

IT IS HEREBY GIVEN that LINCOLNSHIRE COUNTY COUNCIL intends to make an Order on A17 & A151 to allow for maintenance works to be carried out. The effect of the Order will be to impose a temporary 30mph speed limit restriction in place of the current 50mph in the Schedule. The works will be maintained to properties on the scheduled length of road but may be subject to a temporary 30mph speed limit restriction. The works are expected to commence on or around 20 August 2018 and continue for a maximum of 2 weeks. The temporary 30mph speed limit restriction will come into operation on 20 August 2018 and will continue in force for a period of 2 weeks or the completion of the works, whichever is the sooner.

The restriction shall only apply during such periods and to such extent as shall from time to time be indicated by traffic signs provided by the Traffic Signs Regulations and General Directions 2002.

**SCHEDULE**

(A17 Lane to Penny Hill Road)  
(A151 to B1515)

ALAN WILKINS, EXECUTIVE DIRECTOR  
PLANNING, ENVIRONMENT & ECONOMY

**GEDNEY UNITED CHARITIES  
Educational Grants 2018**

Reg. Charity No: 216410

Providing help for the poor of the Parish. For those attending full time education after the statutory school leaving age, including those attending at school, college, university or polytechnic or cases of special needs, under 25 years of age. All persons resident in the Parishes of Gedney Drove End, Gedney and Gedney Hill who wish to apply must do so before 29th September 2018.

Application forms available from  
The Clerk, Mrs S Thacker, Fairview,  
Priestfield Drove, Gedney PE12 0BP.

**To Advertise**

Please call  
**01780  
484833**

ILIFFE MEDIA



**Looking to  
advertise  
your  
Business**  
Call Today  
**01780  
484833**

ILIFFE MEDIA

**Life is local**  
CONTACT US NOW FOR YOUR  
advertising needs **01780 484833** ILIFFE MEDIA

**PUBLIC NOTICES**

**PUBLIC NOTICES**

**LINCOLNSHIRE COUNTY COUNCIL ROAD TRAFFIC REGULATION ACT 1984 TEMPORARY RESTRICTION TO TRAFFIC (EAST LINDSEY AREA - VARIOUS ROADS)**  
 NOTICE IS HEREBY GIVEN that LINCOLNSHIRE COUNTY COUNCIL intends to make an Order on various roads to allow for essential works to be carried out in connection with Triton Kivoli Offshore Wind Farm. The effect of the Order will be to impose temporary 30mph & 40mph speed limit restrictions in place to traffic as listed in the Schedule. The works are expected to commence on or about 10 September 2018 and continue for approximately 18 months. The Order will come into operation on 10 September 2018 and will continue in force for a period of 18 months or the completion of the works whichever is the sooner.

**The restriction shall only apply during such times and to such extent as shall from time to time be indicated by traffic signs prescribed by the Traffic Signs Regulations and General Directions 2002.**  
**R A WILLS, EXECUTIVE DIRECTOR (ENVIRONMENT & ECONOMY)**

**SCHEDULE**

- 30MPH SPEED LIMIT ORDER IN PLACE:**  
**Roman Bank Anderby Creek**  
 (From its junction with Sea Road in a northerly direction for a distance of 1200 metres)  
**Sea Road Anderby Creek**  
 (From a point 705 metres west of its junction with Roman Bank in a westerly direction for a distance of 500 metres)  
**Langham Road Mumby**  
 (From a point 75 metres west of its junction with Willey's Lane in a westerly direction for a distance of 475 metres)  
**Chalk Lane Burgh le Marsh**  
 (From its junction with Ingoldmells Road in a westerly direction for a distance of 350 metres)  
**Ingoldmells Road Burgh le Marsh**  
 (From a point 75 metres north of its junction with Chalk Lane in a southerly direction for a distance of 500 metres)  
**B1195 Wainfleet Road Thorpe Culvert**  
 (From its junction with Burgh Lane in a southerly direction for a distance of 300 Metres)  
**Lynn Bank East Thorpe Culvert**  
 (From its junction with the B1195 Wainfleet Road in an easterly direction for a distance of 300 metres)  
**Lynn Bank West Thorpe Culvert**  
 From its junction with the B1195 in a westerly direction for a distance of 1100 metres  
**Leagate Road Gipsy Bridge**  
 (From a point 760 metres north of its junction with Mere Booth Road in a north westerly direction for a distance of 450 metres)  
**40MPH SPEED LIMIT ORDER IN PLACE:**  
**Youngers Lane Burgh le Marsh**  
 (From a point 25 metres east of its junction with Ingoldmells Road in an easterly direction for a distance of 500 metres)  
**Marsh Lane Orby**  
 (From a distance 1,440 metres south west of its junction with South Ings Lane in a westerly direction for a distance of 600 metres)  
**Thorpe Bank Fendike Corner**  
 (From a point 575 metres south east of its junction with Station Road in an easterly direction for a distance of 600 metres)  
**B1183 Carrington Road Frithville**  
 (From a point 430 metres north of its junction with the B1184 Canister Lane in a northerly direction for a distance of 600 metres)  
**B1184 Canister Lane Frithville**  
 (From a point 515 metres west of its junction with the B1183 Carrington Road in a westerly direction for a distance of 600 metres)  
**B1192 Langrick Road Langrick Bridge**  
 (From a point 140 metres south east of its junction with Ferry Lane in a south easterly direction for a distance of 600 metres)

**Boston Alternative Energy Facility Public Information Days**

The proposed Boston Alternative Energy Facility is a state of the art power-generation plant, generating 102MW\* of renewable energy, of which 80MW\* will be exported to the National Grid and the rest will be used by the facility. The facility will process one million tonnes of refuse derived fuel (RDF - derived from non-recyclable household waste), generating enough power for more than 185,000 homes (equivalent to over 60% of the households in Lincolnshire).

As part of the Phase One consultation process five Public Information Days are being held to introduce the project, giving local communities the opportunity to come and find out more and share their feedback on the project.

Details of these events are below:

Venue	Date	Time
White Hart Hotel 1-5 High Street, Boston, PE21 8SH	Friday 14 September 2018	2 - 8pm
St Nicholas Community Centre Fishtoft Road, Skirbeck, PE21 0AA	Saturday 15 September 2018	2 - 8pm
Black Sluice Lock Cottages South Forty Foot Bank, Landon Road, Boston, PE21 7RA	Wednesday 19 September 2018	2 - 8pm
Fishtoft Pavilion Playing Fields, Church Green Road, PE21 0RP	Thursday 20 September 2018	2 - 8pm
Frampton Church Hall Middlegate Road, Frampton, Boston, PE20 1AW	Friday 21 September 2018	2 - 8pm

If you would like further information about Boston Alternative Energy Facility, please visit: [www.bostonaef.co.uk](http://www.bostonaef.co.uk)

Contact us via email: [consultation@bostonaef.co.uk](mailto:consultation@bostonaef.co.uk)  
 Phone: 0800 0014 050

Or mail using our freepost address:  
 Boston Alternative Energy Facility  
 RTLY-RLGH-GKSE  
 FREEPOST

25 Priestgate, Peterborough, PE1 1JL  
 \* MW hour equivalent



**LINCOLNSHIRE COUNTY COUNCIL ROAD TRAFFIC REGULATION ACT 1984 TEMPORARY RESTRICTION TO TRAFFIC (FOSDYKE - A17)**

NOTICE IS HEREBY GIVEN that LINCOLNSHIRE COUNTY COUNCIL has made an Order on A17 to allow for essential maintenance works to be carried out.

The effect of the Order will be to impose a temporary 30mph & 40mph speed limit in place to general traffic as listed in the Schedule. Access will be maintained to properties on the affected length of road but may be subject to delays.

The works are expected to commence on or about 3 September 2018 and continue for approximately 5 weeks. The Order will come into operation on 3 September 2018 and will continue in force for a period of 18 months or the completion of the works whichever is the sooner.

**SCHEDULE**

- 50mph Speed Limit Order**  
 A17 (Between 400 metres & 700 metres northwest & southwest of Old Main Road)  
**30mph Speed Limit Order**  
 A17 (Between 400 metres northwest & 400 metres southeast of Old Main Road)

**The restriction shall only apply during such times and to such extent as shall from time to time be indicated by traffic signs prescribed by the Traffic Signs Regulations and General Directions 2002.**

**R A WILLS, EXECUTIVE DIRECTOR (ENVIRONMENT & ECONOMY)**

**ROAD TRAFFIC REGULATION ACT 1984, SECTION 14(1) LINCOLNSHIRE COUNTY COUNCIL (BOSTON - PUBLIC RIGHT OF WAY ON WITHAM BANK WEST) TEMPORARY RESTRICTION TO TRAFFIC ORDER**

Lincolnshire County Council proposes to make an Order closing Public Footpath 6 in Boston, to all traffic.

The closure is required to reduce the likelihood of danger to the public whilst works are in progress in proximity to the footpath.

The Order will commence on 17 September 2018 and will last for a period of 6 months, or until the works are completed, whichever is the earlier.

Access to and egress from properties and land situated adjacent to the length of footpath to be closed, if any, will be maintained where possible.

**The restriction shall only apply during such times and to such extent as shall from time to time be indicated by traffic signs prescribed by the Traffic Signs Regulations and General Directions 2016.**

**SCHEDULE**

Public Footpath 6 Witham Bank West between Witham Gardens & Castle Street  
**R A WILLS, EXECUTIVE DIRECTOR (ENVIRONMENT & ECONOMY)**

**DAVID FREDER GROVES (Deceased)**  
 Pursuant to the Trustee Act 1925 any persons having a claim against or an interest in the Estate of the above-named deceased, late of 18 Farnley Court, Boston, PE21 6DE, County Lincolnshire, UK, who died on 14/03/2018, are required to send particulars thereof in writing to the undersigned Solicitors on or before 01/11/2018, after which date the Estates will be distributed having regard only to claims and interests of which they have had notice.  
**ANDREW BARFLEMAN SOLICITORS**  
 19 South 5th May's Lane, Grimsby  
 Lincolnshire DN1 1LF  
 01474 824444  
**IRIS BRACKENBURY (Deceased)**  
 Pursuant to the Trustee Act 1925 any persons having a claim against or an interest in the Estate of the above-named deceased, late of 18 Farnley Court, Boston, PE21 6DE, County Lincolnshire, UK, who died on 23/03/2018, are required to send particulars thereof in writing to the undersigned Solicitors on or before 01/11/2018, after which date the Estates will be distributed having regard only to claims and interests of which they have had notice.  
**ANDREW BARFLEMAN SOLICITORS**  
 19 South 5th May's Lane, Grimsby  
 Lincolnshire DN1 1LF  
 01474 824444

**LINCOLNSHIRE COUNTY COUNCIL ROAD TRAFFIC REGULATION ACT 1984 TEMPORARY RESTRICTION TO TRAFFIC (FISHTOFT - CUT END ROAD)**

NOTICE IS HEREBY GIVEN that LINCOLNSHIRE COUNTY COUNCIL has made an Order on Cut End Road to allow for essential maintenance works to be carried out.

The effect of the Order will be to close the road to traffic in the vicinity of Ruma Bridge.

Access will be maintained to properties on the affected length of road but may be subject to delays.

The works are expected to commence on or about 3 September 2018 and continue for approximately 5 days.

The Order will come into operation on 3 September 2018 and will continue in force for a period of 18 months or the completion of the works whichever is the sooner.

**The restriction shall only apply during such times and to such extent as shall from time to time be indicated by traffic signs prescribed by the Traffic Signs Regulations and General Directions 2002.**

**R A WILLS, EXECUTIVE DIRECTOR (ENVIRONMENT & ECONOMY)**

**LINCOLNSHIRE COUNTY COUNCIL ROAD TRAFFIC REGULATION ACT 1984 TEMPORARY RESTRICTION TO TRAFFIC (ALGARKIRK - A17)**

NOTICE IS HEREBY GIVEN that LINCOLNSHIRE COUNTY COUNCIL has made an Order on A17 to allow for essential maintenance works to be carried out.

The effect of the Order will be to close the road to traffic between Sutterton roundabout & Washdyke Road.

Access will be maintained to properties on the affected length of road but may be subject to delays.

The works are expected to commence on or about 3 September 2018 and continue for approximately 5 weeks.

The Order will come into operation on 3 September 2018 and will continue in force for a period of 18 months or the completion of the works whichever is the sooner.

**The restriction shall only apply during such times and to such extent as shall from time to time be indicated by traffic signs prescribed by the Traffic Signs Regulations and General Directions 2002.**

**R A WILLS, EXECUTIVE DIRECTOR (ENVIRONMENT & ECONOMY)**

**LINCOLNSHIRE COUNTY COUNCIL ROAD TRAFFIC REGULATION ACT 1984 TEMPORARY RESTRICTION TO TRAFFIC (FOSDYKE - OLD MAIN ROAD)**

NOTICE IS HEREBY GIVEN that LINCOLNSHIRE COUNTY COUNCIL has made an Order on Old Main Road to allow for essential maintenance works to be carried out.

The effect of the Order will be to close the road to traffic at the junction with the A17.

Access will be maintained to properties on the affected length of road but may be subject to delays.

The works are expected to commence on or about 3 September 2018 and continue for approximately 5 weeks.

The Order will come into operation on 3 September 2018 and will continue in force for a period of 18 months or the completion of the works whichever is the sooner.

**The restriction shall only apply during such times and to such extent as shall from time to time be indicated by traffic signs prescribed by the Traffic Signs Regulations and General Directions 2002.**

**R A WILLS, EXECUTIVE DIRECTOR (ENVIRONMENT & ECONOMY)**

**VIEW PROPERTY EVERY WEEK**

**IN PAPER AND ONLINE**

# Classified

## CLASSIFIED

### FOR SALE

**COINS MEDALS BANKNOTES GOLD**  
 Buying old British & foreign coins & bank notes, War medals & militaria. Large collections purchased. Good prices paid for scrap gold & silver. Sovereigns, min £200. Silver coins before 1947 12x face min, pocket watches. Home Visits, probate valuations.  
**Coins & Collectors Centre, 6 Church St. Alford**  
 Tel: 01507 463179 or 07947 517971 anytime Open Tue, Wed, Fri, Sat

**SECONDHAND BOOKS**  
 Open 10-5pm weekends and Bank Holidays until Halloween, 25 High Street, Billinghamborough

**CAFETERIA** royal about old 2000's, cash registers, 0179373018

**CARAVAN** FORCH evening Sat/ Sun, good order, 0179373018

**CARAVAN** side AL 40 new, 0179373018

**CARAVAN** heavy duty, 0179373018

**CONCRETE** path edging, 0179373018

**COOKERHOOD** Beumatic, 0179373018

**COOKERHOOD** Beumatic, 0179373018

**CYCLE** CARRIERS 2 new, 0179373018

**DESIGNER** Barrels, 0179373018

**DINNERWARE** reds, 0179373018

**FENCING** galvanised, 0179373018

**GRANITE** TLE 4x2 1/2m, 0179373018

**HANGING** rail, hooks, 0179373018

**MOSAIC** 13 grey stone, 0179373018

**oak** royal Worcester, 0179373018

**PORTABLE** new camping, 0179373018

**POWERHOUSE** single, 0179373018

**RETRO** Chippy SS, 0179373018

**SPONGEBOB** new, 0179373018

**TABLE** black sliding leaf, 0179373018

**WICKER** PICNIC, 0179373018

**WINDOW** UPVC, 0179373018

**WINDOW** UPVC, 0179373018

**COLLECTORS CORNER & ANTIQUES**

**FREE TO TAKE AWAY**

**Rubble** concrete and brick, 0179373018

**FURNITURE GENERAL**

**Free** For Collection - Four, 0179373018

## HOLIDAYS

### HOLIDAYS GENERAL

**Over 50s Specialist Travel Insurance**  
**15% OFF Travel Insurance!**  
 Please Quote: JP15  
**Call us FREE 7 days a week 0800 033 4896**

**Staysure staysure.co.uk**  
 Discount applies to the first premium of an Annual Add To or Single Trip policy and not to any medical screening costs when relevant. Terms & Conditions apply.

## PERSONAL

### DEBT MANAGEMENT

**Debt Rescuers**  
 Do you owe over £6000 of debt to 2 or more creditors?  
**0800 009 6362**

## PERSONAL FINANCE

**Are you thinking about your pension income?**  
 Compare your options to find the best income for you.  
**Age Partnership**

**Cheap Motor Insurance**  
**0800 479 3396**

## PERSONAL FINANCE

**Could you unlock tax-free money from your home?**  
**Age Partnership**  
 Call Freephone 08000 810 817

**Find all the local property info you need**  
[bostonstandard.co.uk/property](http://bostonstandard.co.uk/property)

## PUBLIC NOTICES

### PUBLIC NOTICES

**WEST LINSEY DISTRICT COUNCIL**  
 Planning (Listed Buildings and Conservation Areas) Act 1990; Notice under section 73 Town and Country Planning Act 1990; Hazardous Substances Act 1990  
 WLDC has received the following applications for planning permission:  
 138144: Legacy: Mrs Hanbury: Lingham Farm Wood, Lingham Lane: proposed storage barn (affects right of way)  
 138276: North Overby: Mr & Mrs Cooper: Church Farm House, Church Lane: single storey extension. (affects right of way)  
 You may view the application, plans and other submitted documents online at [www.west-linsey.gov.uk/planning](http://www.west-linsey.gov.uk/planning) or at the Guildhall, Marshall's Yard, Gainborough, DN21 2NA. Representations should be made in writing to the Chief Operating Officer at the Council within 24 days of publication of this notice. Anyone requiring an acknowledgement should state this in writing and send a stamped SAE. Mark Sturgess, Executive Director of Operations and Head of Paid Service

## PUBLIC NOTICES

**Are you thinking about your pension income?**  
 Compare your options to find the best income for you.  
**Age Partnership**

**Call Freephone 08000 810 815**

## DENTISTS

**ADVANCE DENTURES**  
 In the comfort of your own home  
**FREE Consultation**  
 All major cards taken  
**call: 01226 747 511 • mob: 07779 083221**

## PUBLIC NOTICES

### PUBLIC NOTICES

**WEST LINSEY DISTRICT COUNCIL**  
 Planning (Listed Buildings and Conservation Areas) Act 1990; Notice under section 73 Town and Country Planning Act 1990; Hazardous Substances Act 1990  
 WLDC has received the following applications for planning permission:  
 138144: Legacy: Mrs Hanbury: Lingham Farm Wood, Lingham Lane: proposed storage barn (affects right of way)  
 138276: North Overby: Mr & Mrs Cooper: Church Farm House, Church Lane: single storey extension. (affects right of way)  
 You may view the application, plans and other submitted documents online at [www.west-linsey.gov.uk/planning](http://www.west-linsey.gov.uk/planning) or at the Guildhall, Marshall's Yard, Gainborough, DN21 2NA. Representations should be made in writing to the Chief Operating Officer at the Council within 24 days of publication of this notice. Anyone requiring an acknowledgement should state this in writing and send a stamped SAE. Mark Sturgess, Executive Director of Operations and Head of Paid Service

## PUBLIC NOTICES

### PUBLIC NOTICES

**Are you thinking about your pension income?**  
 Compare your options to find the best income for you.  
**Age Partnership**

## PUBLIC NOTICES

**Are you thinking about your pension income?**  
 Compare your options to find the best income for you.  
**Age Partnership**

**Are you thinking about your pension income?**  
 Compare your options to find the best income for you.  
**Age Partnership**

**Boston Alternative Energy Facility Public Information Days**  
 The proposed Boston Alternative Energy Facility is a state of the art power-generation plant, generating 102MW\* of renewable energy, of which 80MW\* will be exported to the National Grid and the rest will be used by the facility. The facility will process one million tonnes of refuse derived fuel (RDF - derived from non-recyclable household waste), generating enough power for more than 185,000 homes (equivalent to over 60% of the households in Lincolnshire).  
 As part of the Phase One consultation process five Public Information Days are being held to introduce the project, giving local communities the opportunity to come and find out more and share their feedback on the project.  
**Details of these events are below:**

Venue	Date	Time
White Hart Hotel 1-5 High Street, Boston, PE21 6SN	Friday	2 - 8pm
St Nicholas Community Centre Fishoft Road, Skirbeck, PE21 6AA	Saturday	2 - 8pm
Black Sluice Lock Cottages South Forty Foot Bank, London Road, Boston, PE21 7RA	Wednesday	2 - 8pm
Fishoft Pavilion Playing Fields, Church Green Road, PE21 6RP	Thursday	2 - 8pm
Frampton Church Hall Middlegate Road, Frampton, Boston, PE20 1AW	Friday	2 - 8pm

If you would like further information about Boston Alternative Energy Facility, please visit: [www.bostonaef.co.uk](http://www.bostonaef.co.uk)  
 Contact us via email: [consultation@bostonaef.co.uk](mailto:consultation@bostonaef.co.uk)  
 Phone: 0800 0014 050  
 Or mail using our freepost address:  
 Boston Alternative Energy Facility  
 RTLY-RLGH-GKSE  
 FREEPOST  
 25 Priestgate, Peterborough, PE1 1JL  
 \* MW hour equivalent



# Classified

## HOME SERVICES

**WRIGHTS**  
HOLBEACH ASPHALT LIMITED  
EST. 1959  
Established 55 Years.  
Flat Roofing Specialists, All Felt Systems Polyroof  
Glass Fibre, Mastic Asphalt Flooring & Roofing.  
enquiries@whal.co.uk • www.whal.co.uk  
01406 362 585 \ 07930 313 722

## KITCHEN SERVICES

**Quality Kitchens**  
by Professionals  
**Colin & John**  
services  
30 Years of Value & Experience  
Kitchens to suit your Budget  
Tiling & Laminate Flooring Undertaken  
Free Estimates & Planning  
Large Selection of Doors Worktops  
Call:  
**Colin 07714 251237**  
**01406 425262**  
answerphone + fax  
www.colinandjohnkitchens.co.uk

## LOCKSMITHS

**STEVE THE LOCKSMITH**  
Over 30 years experience. Upvc lock specialist,  
repairs and upgrades to insurance standards.  
All types of locks supplied and fitted.  
Any lock problem give us a call.  
**24 HOUR SERVICE**  
**01406 422797** or **07831 210455**  
www.stevethelocksmith.com

## PAINTING & DECORATING

**P.I. DECORATING**  
**Painting & Wallpapering**  
• Fully insured • Friendly & reliable service  
• No job too small  
• Discount available for O.A.P's  
• Prompt, free estimates & advice given  
Call Paul on 01529 240628/ 07961 847737

## PATHS & DRIVES

**TML**  
Construction Ltd  
www.tmlconstructionltd.com  
info@tmlconstructionltd.com

WE SPECIALISE IN TARMAC RED OR BLACK, SURFACE DRESSING,  
TAR AND CHIP, GRAVEL DRIVES, BLOCK PAVING, PATIOS,  
DRAINAGE, SITE CLEARANCE, MINI DIGGER WITH OPERATOR HIRE.

**GUARANTEED TO BEAT ANY LIKE FOR LIKE QUOTATION**

FREE ESTIMATES & ADVICE  
ALL WORK FULLY GUARANTEED  
FULL PUBLIC LIABILITY INSURANCE

**TARMACADAM AND TAR & CHIP**  
FREEPHONE 0800 1910214  
SPALDING 01775 888637 DIRECT 07502 985350  
COMPANY REG 08282965

## PATHS & DRIVES

**100% MAINTENANCE FREE DRIVEWAYS**  
**15 YEAR GUARANTEE**  
**FREE QUOTATIONS**  
CHOICE OF COLOURS AVAILABLE  
The ultimate driveway solution.  
Made from 100% recycled car tyres.  
**EVERLAST**  
RUBBER CRUMB SURFACES  
NO SLIP - NO WEEDS - NO WATER  
CALL 0800 474 8372  
LOCAL SHOW HOMES IN YOUR AREA  
www.everlastdriveways.co.uk

## PROPERTY MAINTENANCE

**S & A METCALFE**  
**PROPERTY MAINTENANCE**  
Interior & Exterior Decorating  
Carpentry - Tiling - General Repairs  
30 Years Experience  
FREE ESTIMATES. NO VAT  
Tel: 01775 680824 or 07857 702939

## WINDOWS, DOORS & CONSERVATORIES

**D. SMITH**  
UPVC WINDOW & DOOR REPAIRS  
Sealed Units / Handles  
Locks • Conservatory Repairs • Hinges • Panels etc  
Supply and fit quality UPVC windows and doors  
For Competitive Prices | CALL DANNY  
01775 767550 ~ 07910746428

## PERSONAL

## FAMILY & FRIEND SEARCH

**Looking for cousins.**  
Anyone with information regarding the late  
Joe Richardson who lived in  
Holbeach St Johns. Brother named Tommy,  
son named Stephen + 2 daughters.  
Originally from Newcastle.  
Please call 07513 767572

## PERSONAL SERVICES

**McTimoney**  
**Chiropractic**  
The gentle effective treatment for  
back, neck, joint and muscle pain,  
Sciatica, sports and accident injuries.  
**Ken Lorenz** BSC (Chiro) MMCA  
Long Sutton Medical Centre  
Trafalgar Square, Long Sutton  
Mob: 07939 240410  
www.chiroken.co.uk  
**Ken Lorenz** Chiropractor  
www.facebook.com/KenLorenzChiropractor

## PUBLIC NOTICES

## PUBLIC NOTICES

## PUBLIC NOTICES

**GEDNEY UNITED CHARITIES**  
**Educational Grants 2018**  
Reg. Charity No: 216410  
Providing help for the poor of the Parish.  
For those attending full time education after  
the statutory school leaving age, including  
those attending at school, college,  
university or polytechnic or cases of  
special needs, under 25 years of age.  
All persons resident in the Parishes of  
Gedney Drove End, Gedney and Gedney  
Hill who wish to apply must do so before  
29th September 2018.  
Application forms available from  
The Clerk, Mrs S Thacker, Fairview,  
Priestfield Drive, Gedney PE12 0BP.

## Boston Alternative Energy Facility Public Information Days

The proposed Boston Alternative Energy Facility is a **state of the art power-generation plant, generating 102MW\* of renewable energy**, of which 80MW\* will be exported to the National Grid and the rest will be used by the facility. The facility will process one million tonnes of refuse derived fuel (RDF - derived from non-recyclable household waste), generating enough power for more than 185,000 homes (equivalent to over 60% of the households in Lincolnshire).  
As part of the Phase One consultation process five Public Information Days are being held to introduce the project, giving local communities the opportunity to come and find out more and share their feedback on the project.

### Details of these events are below:

Venue	Date	Time
<b>White Hart Hotel</b> 1-5 High Street, Boston, PE21 8SH	Friday 14 September 2018	2 - 8pm
<b>St Nicholas Community Centre</b> Fishtoft Road, Skirbeck, PE21 0AA	Saturday 15 September 2018	2 - 8pm
<b>Black Sluice Lock Cottages</b> South Forty Foot Bank, London Road, Boston, PE21 7RA	Wednesday 19 September 2018	2 - 8pm
<b>Fishtoft Pavilion</b> Playing Fields, Church Green Road, PE21 0RP	Thursday 20 September 2018	2 - 8pm
<b>Frampton Church Hall</b> Middlegate Road, Frampton, Boston, PE20 1AW	Friday 21 September 2018	2 - 8pm

If you would like further information about Boston Alternative Energy Facility, please visit:  
**www.bostonaef.co.uk**  
Contact us via email: **consultation@bostonaef.co.uk**  
Phone: **0800 0014 050**  
Or mail using our freepost address:  
Boston Alternative Energy Facility  
RTLY-RLGH-GKSE  
FREEPOST  
25 Priestgate, Peterborough, PE1 1JL  
\* MW.hour equivalent



**CHRISTOPHER BOND**  
(Deceased)  
Pursuant to the Trustee Act 1925 any persons having a claim against or an interest in the Estate of the aforementioned deceased, late of 2 Barnea Road Donington Spalding PE11 4UW, who died on 01/09/2017, are required to send particulars thereof in writing to the undersigned Solicitors on or before 02/11/2018, after which date the Estate will be distributed having regard only to claims and interests of which they have had notice.  
**BARR ELLISON LLP**  
39 Parkside Cambridge CB1 1PN

**JANE SUSAN**  
**KINGSNORTH-PAYNE**  
(also known as **JANE SUSAN**  
**KINGSNORTH**) (Deceased)  
Pursuant to the Trustee Act 1925 any persons having a claim against or an interest in the Estate of the aforementioned deceased, late of Beck Farm Cottage Beck Bank Gosbottin Clough Spalding Lincolnshire PE11 4JL, who died on 12/08/2018, are required to send particulars thereof in writing to the undersigned Solicitors on or before 02/11/2018, after which date the Estate will be distributed having regard only to claims and interests of which they have had notice.  
**MAPLES SOLICITORS LLP**  
23 New Road Spalding  
Lincolnshire PE11 1DH

**MARGARET ROBERTSON**  
**HARRISON** (Deceased)  
Pursuant to the Trustee Act 1925 any persons having a claim against or an interest in the Estate of the above named, late of 33 Pendula Road, Wisbech PE13 9FR, who died on 24/04/2018, are required to send written particulars thereof to the undersigned on or before 21/08/2018, after which date the Estate will be distributed having regard only to the claims and interests of which they have had notice.  
**David John Harrison**,  
The London Gazette (6010),  
PO Box 3584, Norwich NR7 7WD.

**To Advertise**  
Please call  
**01780 484833**  
**ILIFFE MEDIA**

**Life is local**  
**CONTACT US NOW FOR YOUR advertising needs 01780 484833**